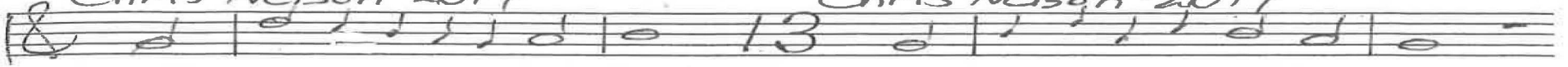


This man Luke 24

Chris Nelson 2017

Chris Nelson 2017



Prelude, Geneva 84

ALL



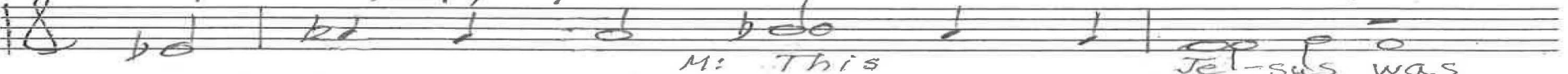
1. This man we con-sid-ered so great



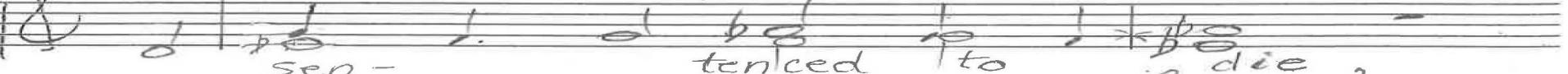
in mat-ters that the courts would rate,



moved us, a proph-et of the na-tion.



M: This Je-sus, with fate mis-al-ied,



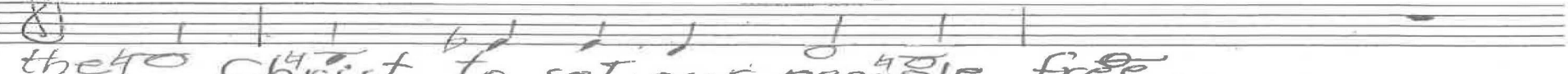
was sen-tenced to death, cru-ci-fied,



ALL: by means of their false ac-cu-sa-tion.



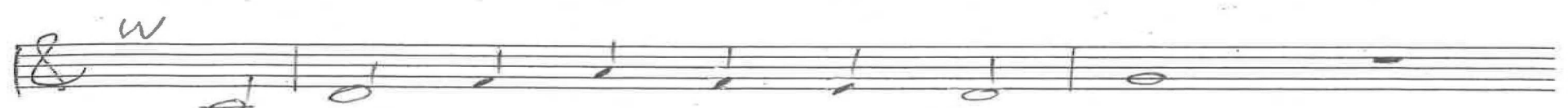
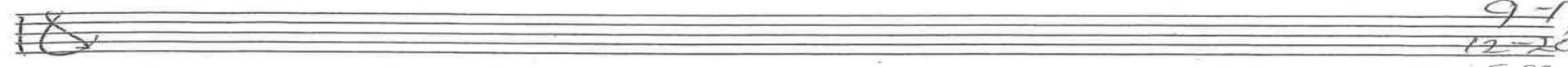
We'd hoped that this king was to be



the Christ to set our people free.

p. 1/4 Luke 24 Chris Nelson 2017

4-19
9-19
12-20
5-22



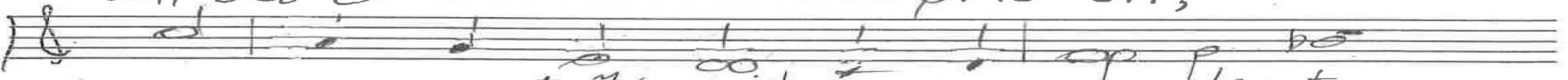
2. 'Re-ports by the wom-en who'd gone



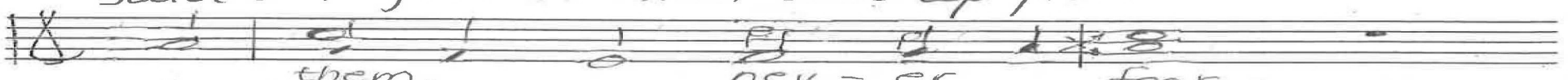
with spic-es at the crack of dawn,



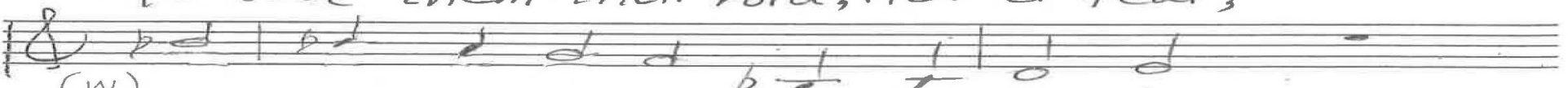
all set to dec-o-rate the pris-on,



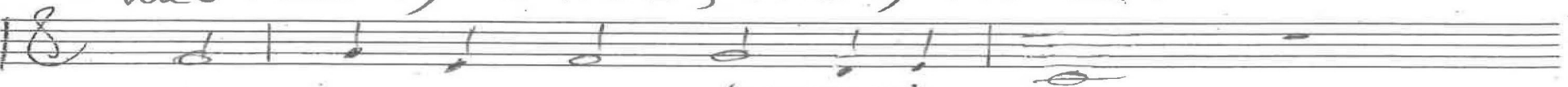
w: said an-gels to them did ap-pear
+ M: said an-gels to



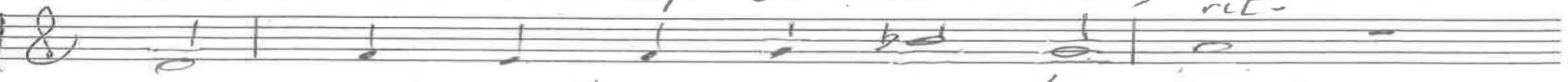
to tell them their lord, nev-er fear,
them, nev-er fear,



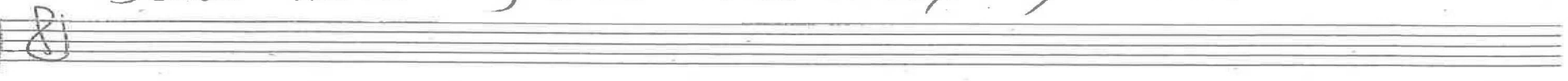
(w) was real-ly a-live, tru-ly ris-en.



Then Pe-ter ran up to the tomb, rit.



saw nothing but the emp-ty room.?

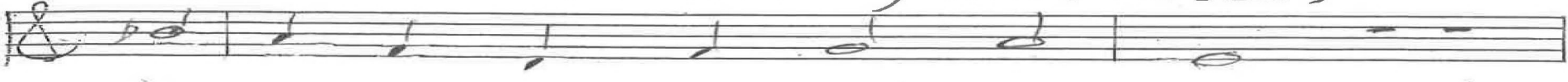


p. 24 Luke 24 Chris Nelson 2017

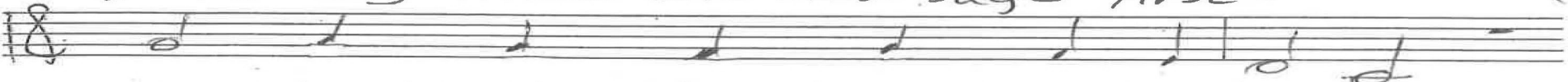
4-19
9-19
12-20
5-22



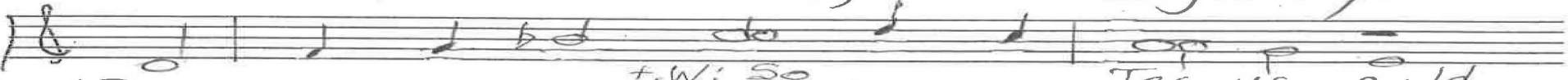
3. "So slow in be-com-ing well versed,



to re-cog-nize the mes-sage first:



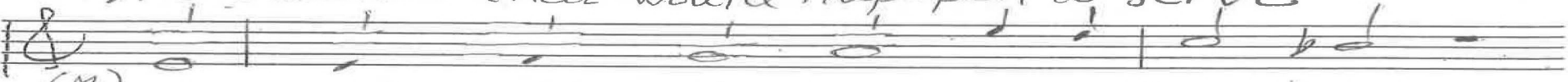
rise should the Christ, and so to glo-ry!"



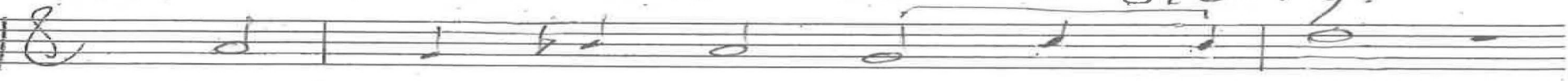
M: So Jes-us could keep in re-serve



the themes that would hap-pen to serve



(M) sal-va-tion's most ra-di-ant sto-ry.



When those on that road neared the end,



to stay with them they pressed their friend,

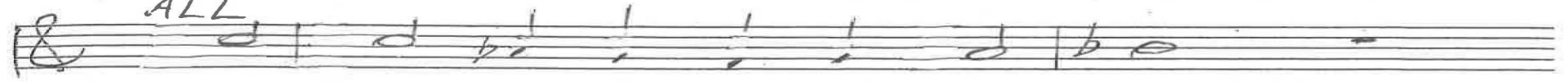


p. 3/4 Luke 24 Chris Nelson 2017

4-19
9-19
12-20
5-22



ALL



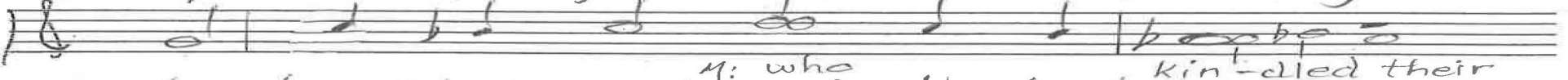
4. who took, at the ta-ble, some bread,



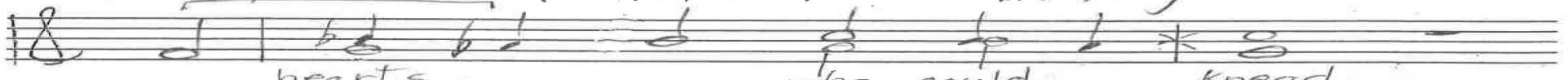
and broke it, with the bless-ing said,



Known to their eyes, be-fore them fad-ing,



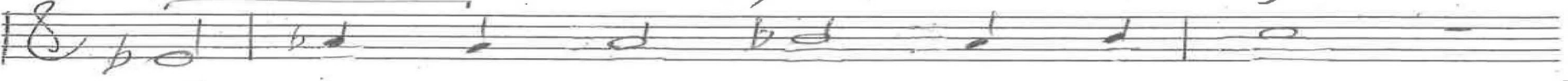
w: who kin-dled their hearts to be keyed



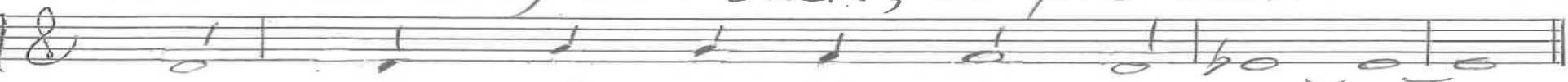
to hearts, who could knead
wor-ship, as one who could knead



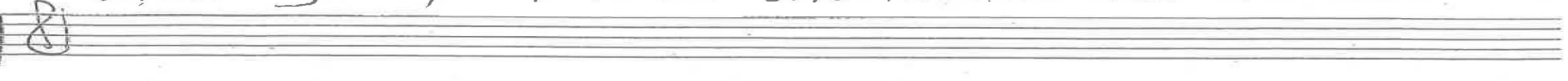
all: that ker-nel of life, still e-vad-ing.



At once they went back, to pre-sent



their grasp of what the loaves had meant.



p. 4/4 Luke 24 Chris Nelson 2017

4-19
9-19
12-20
9-21
5-22
12-22
9-23
3-24

Gt

Prelude in G, Genevan 84

express. All Inc we considered so great

1. This man

Organ p. 1/5 Luke 24 Chris Nelson 2017

4-19
9-19

12-20
9-21
5-22
12-22
9-23
3-24

W

2. Reports by the women

In d

Organ p. 2/5
Luke 24
Chris Nelson 2017

4-19
9-19
12-20
9-21
5-22
12-22
9-23
3-24

3 So slow in becoming

In F, v. 2 inverted

Organ p. 3/5
Luke 24
Chris Nelson 2017

4-19
9-19
12-20
9-21
5-22
12-22
9-23
3-24

ALL who took at the table some bread

In Eb (v. 1)
express.

Organ p. 4/5
Luke 24
Chris Nelson 2017

Handwritten musical score for the first system. The top staff is in treble clef and the bottom staff is in bass clef. The music consists of several measures with notes, rests, and chord markings. A prominent marking is "Cm 84" in the second measure. The notation includes various accidentals and rhythmic values.

4-19
 9-19
 12-20
 9-21
 5-22
 12-22
 9-23
 3-24

Empty musical staff system with treble and bass clefs.

Empty musical staff system with treble and bass clefs.

Empty musical staff system with treble and bass clefs.

Empty musical staff system with treble and bass clefs.

Organ p. 5/5
 Luke 24
 Chris Nelson 2017