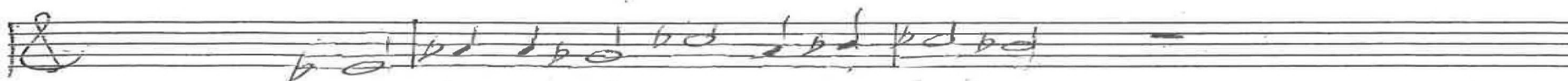


The prophet
I Kings 21

1-20
12-20
5-22
3-24

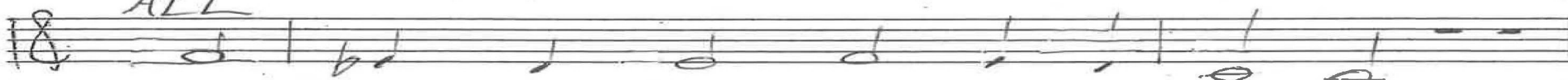
Chris Nelson 2017

Chris Nelson 2017



Intonation

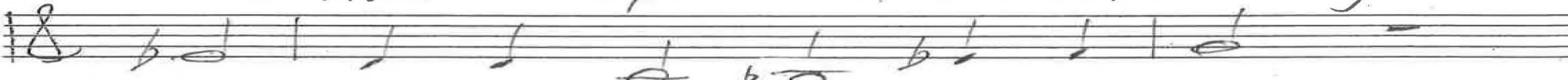
ALL



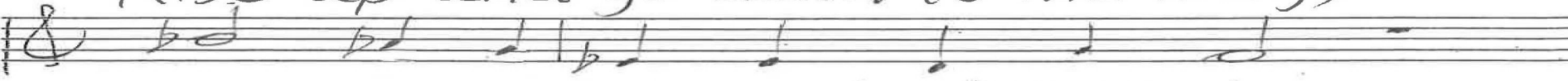
1. E-li-jah was used to de-tect-ing



words that the spir-it was di-rect-ing:



Rise up and go down to the king,



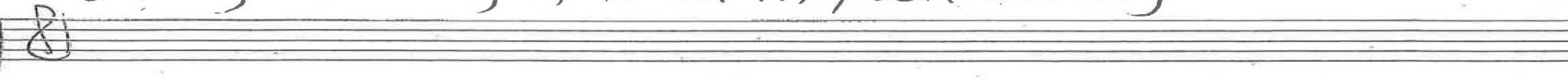
seen on the pro-per-ty re-nowned,



(one where the own-er's on the ground),



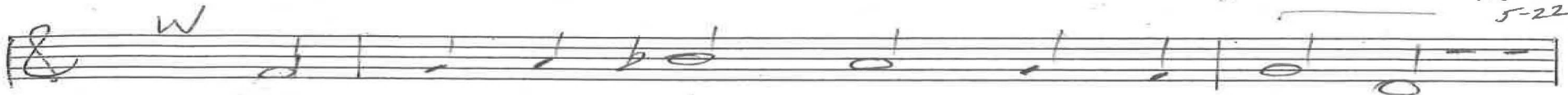
the grab-bing of land in full swing.



p. 1/4
I Kings 21
Chris Nelson 2017



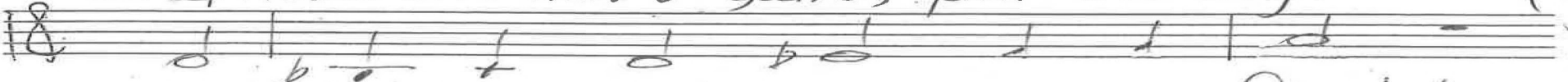
1-20
12-20
5-22



2. Tell A-hab who's irked me for do-ing



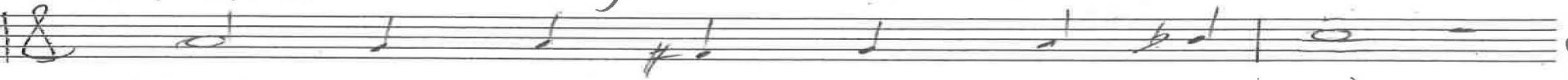
all these she-nan-i-gans, pur-su-ing:



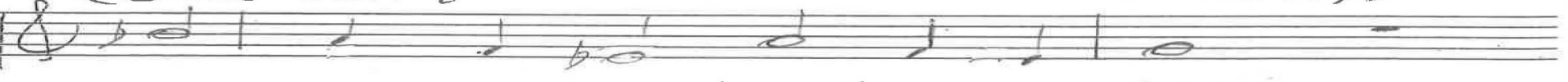
For tak-ing what's owned may you flinch!



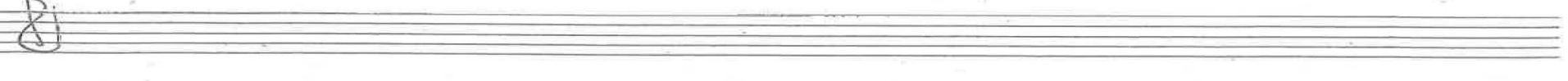
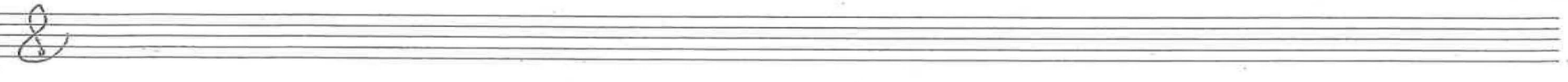
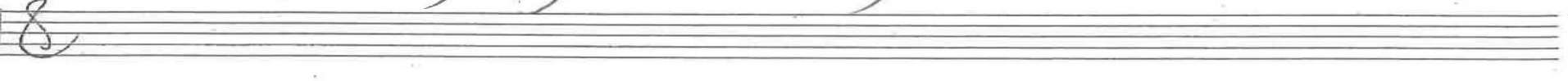
In come the dogs when Na-both died,



(God can't en-dure this hom-i-cide),



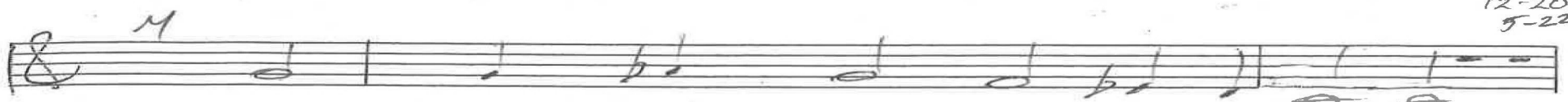
to stud-y you too by the inch.



p. 24
I Kings 21
Chris Nelson 2017



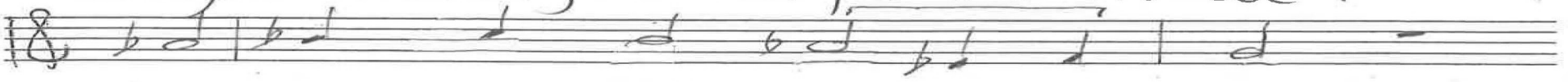
1-20
12-20
5-22



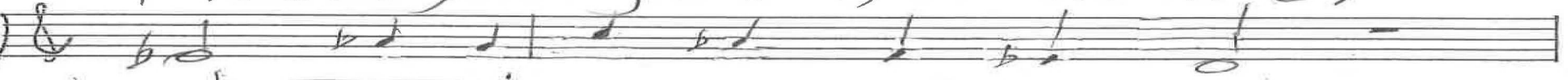
3. You've found me right out, O my riv-al,



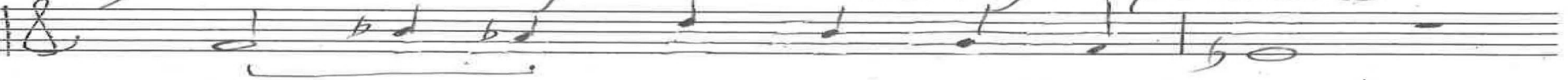
caught me a glut-ton for sur-viv-al.



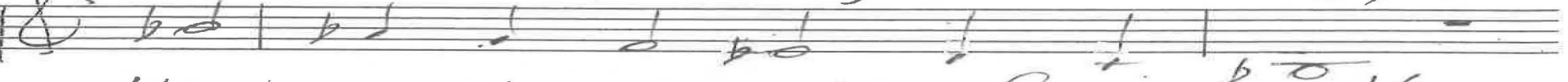
I found you right out, to the hilt,



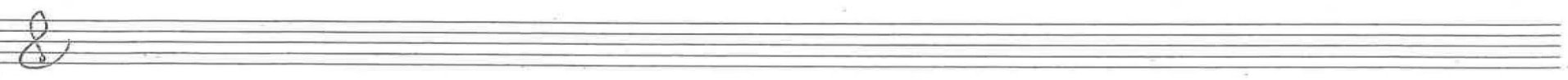
gross al-le-ga-tions that you poured,



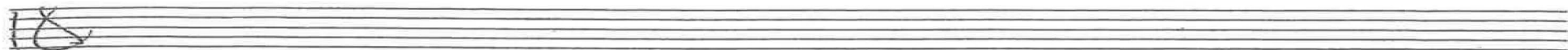
(deeds so dis-pleas-ing to the Lord!),



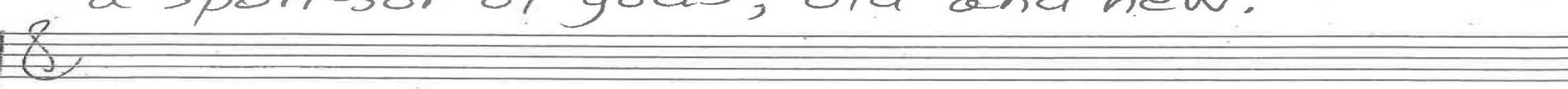
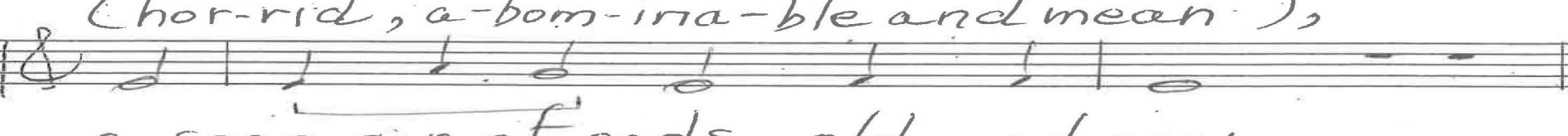
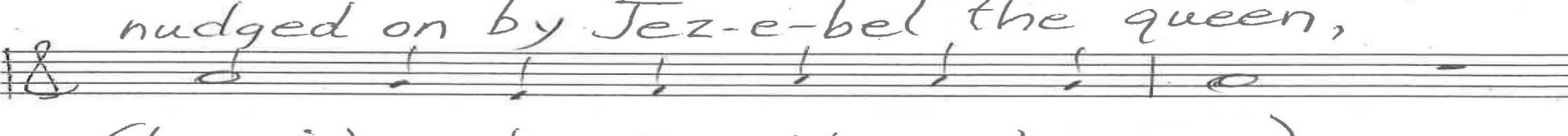
this e-vil pro-ceed-ing from ^bguilt.



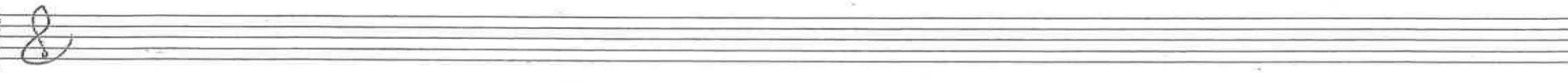
p. 3/4 Kings 21
Chris Nelson 2017



1-20
12-20
5-22



Coda



p. 4/4
Kings 21
Chris Nelson 2017

ALL

Intonation Gt G_n 94

1. Elijah

9-19
12-20
9-21
1-5-22
12-22
9-23
3-24

In c

2. Tell Ahab

In g

Organ P. 1/3

Kings 21

Chris Nelson 2023

Handwritten musical notation on two staves. The top staff is in treble clef with a key signature of one flat (Bb). The bottom staff is in bass clef. The music consists of several measures of notes and rests. On the right side of the page, there is a vertical list of numbers: 19, 12-20, 9-21, 5-22, 12-23, 9-23, 3-24.

Handwritten musical notation on two staves. The top staff is in treble clef with a key signature of one flat (Bb). The bottom staff is in bass clef. The music includes the lyrics "3. You've found me". Above the first measure of the top staff is the letter "M". Below the first measure of the bottom staff is the text "In Eb".

Handwritten musical notation on two staves. The top staff is in treble clef with a key signature of one flat (Bb). The bottom staff is in bass clef. The music consists of several measures of notes and rests.

Handwritten musical notation on two staves. The top staff is in treble clef with a key signature of one flat (Bb). The bottom staff is in bass clef. The music includes the lyrics "4. The". Above the first measure of the top staff is the word "ALL". Below the first measure of the bottom staff is the text "In a, Geneva".

Handwritten musical notation on two staves. The top staff is in treble clef with a key signature of one flat (Bb). The bottom staff is in bass clef. The music includes the lyrics "way of misrule".

Organ p. 2/3
Kings 21
Chris Nelson 2017

9-19
12-20
9-21
5-22
12-22
9-23
3-24

Organ p. 3/3

Kings 21

Chris Nelson 2017