

Lord, you're my shepherd
Psalm 23

11-19
11-20
4-22
2-24

Chris Nelson 2017 Chris Nelson 2017

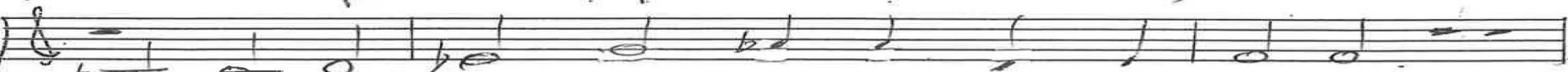


Intonation

ALL



1. Lord, you're my shepherd ten-der-ly dis-clos-ing



a-bun-dant mead-ows ver-dant for re-pos-ing



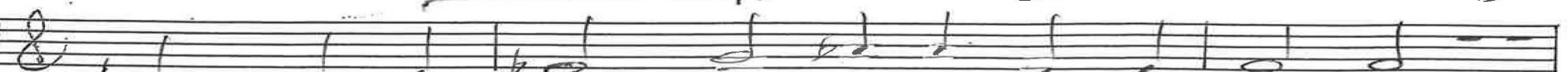
grass that de-notes your qui-et-ness re-stor-ing



my hun-gry soul, when I am done ex-plor-ing



next to the calm-ing wa-ters you are lead-ing



all who de-sire those vir-tues that we're need-ing.



p. 1/3 Psalm 23 Chris Nelson 2017

M
Musical staff with treble clef and a melody line.

2. Shades dark as night in val-leys I'm tra-vers-ing, 11-19
11-20
4-22

Musical staff with treble clef and a melody line.

I fear no dan-ger, va-pors are dis-pers-ing.

Musical staff with treble clef and a melody line.

You, with your rod and staff, go on con-sol-ing

Musical staff with treble clef and a melody line.

my tim-id heart, my way-ward-ness con-trol-ing.

Musical staff with treble clef and a melody line.

You, who'd pre-pare a ta-ble for ad-vanc-ing

Musical staff with treble clef and a melody line.

life which my riv-als ce-le-brate by danc-ing.

Empty musical staff with treble clef.

Empty musical staff with treble clef.

Empty musical staff with treble clef.

Empty musical staff with treble clef.

P. 2/3 Psalm 23 Chris Nelson 2017

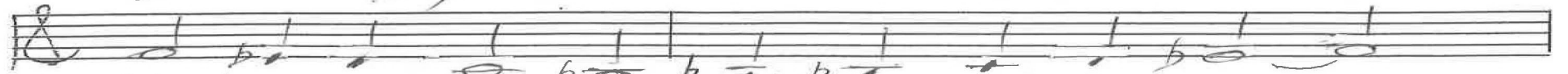
ALL



3. Oil on my head, you're mer-ci-ful, is show-ing ¹¹⁻¹⁹ ₁₁₋₂₀ ₇₄₋₂₂



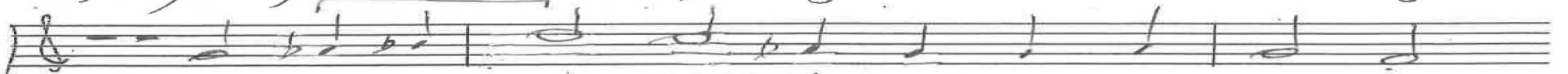
my cup of joy is filled to ov-er-flow-ing.



How your de-light in good-ness is pur - su -



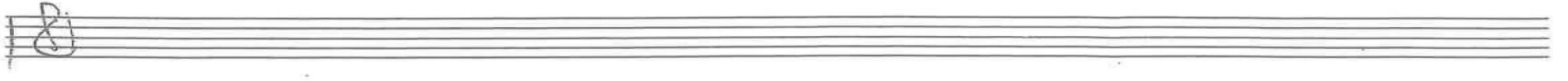
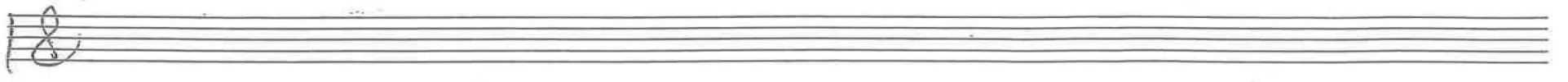
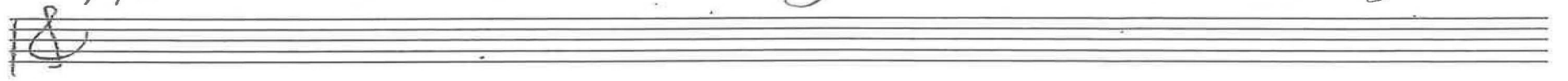
-ing my days on earth, my vig-i-lance re-new-ing!



Dare I re-pond, I'd vol-un-teeer thanks-giv-ing.



Here would I dwell as long as I am liv-ing!



p. 3/3 Psalm 23 Chris Nelson 2017

Intonation

ALL

1. Lord,

10-19
11-20
8-21
4-22
10-22
7-23
2-24

You're my shepherd

In g

M In b^b

2. Shades dark as night

Organ p. 1/3 Psalm 23 Chris Nelson 2017

Handwritten musical notation for the first system, featuring a treble clef staff with a key signature of two flats and a 7/8 time signature. The bass staff contains complex chordal structures with various accidentals and dynamics.

10-19
11-20
8-21
4-22
10-22
7-23
2-24

Handwritten musical notation for the second system, continuing the piece with similar notation and complex bass line chords.

Handwritten musical notation for the third system, including a "3." marking and a "4" time signature change in the bass staff.

Oil on my head

express.

In E^b

Handwritten musical notation for the fourth system, with the text "filled to overflowing" written above the treble staff.

Handwritten musical notation for the fifth system, concluding the piece with complex chordal structures in the bass staff.

Organ p. 2/3 Psalm 23 Chris Nelson 2017

10-19
11-20
8-21
4-22
10-22
7-23
2-24

Organ p. 3/3 Psalm 23 Chris Nelson 2017