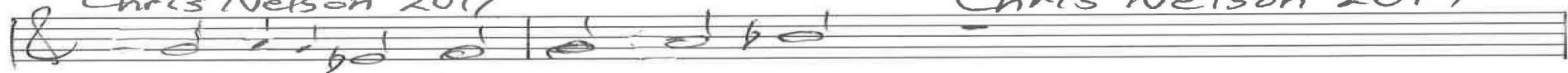


Thanks to the Lord
Psalm 138

11-20
4-22

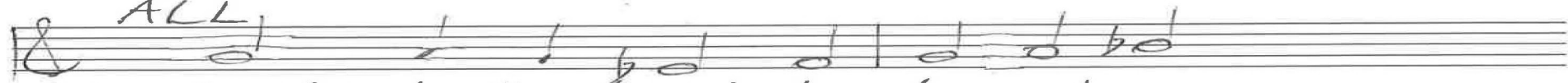
Chris Nelson 2017

Chris Nelson 2017

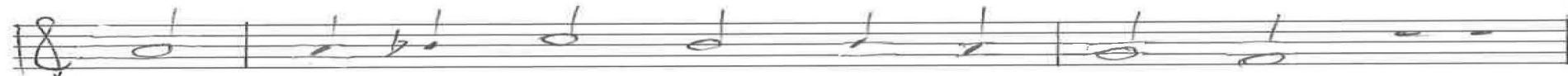


Intonation

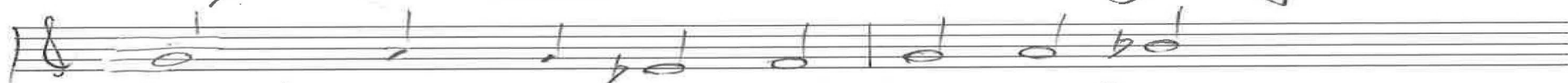
ALL



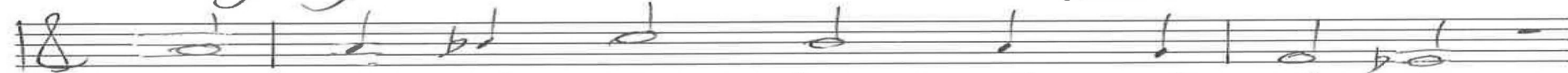
1. Thanks to the Lord I vol-un-teer,



it's you who hear all that I'm say-ing.



Though your a-bode be near or far,



your an-gels are staged where I'm play-ing.



I'm bring-ing, for your faith-ful love,



the of-fering of a grate-ful serv-ant.

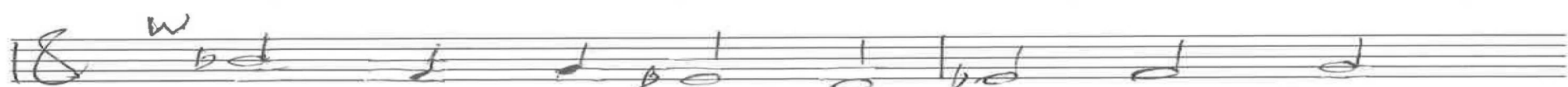


And where I'm feel-ing strong you move



in ways that prove you are ob-serv-ant.

P. 1/3 Psalm 138 Chris Nelson 2017



2. Kings on the earth sub-mit to fate

11-20
4-22



and cel-e-brate plans that you're form-ing,



Down out of heaven leapt your Word,



and sub-jects heard wind that was warm-ing,



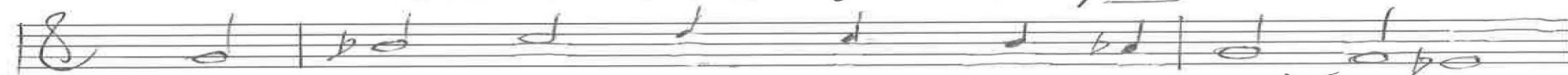
Your deeds are told in verse sub-lime,



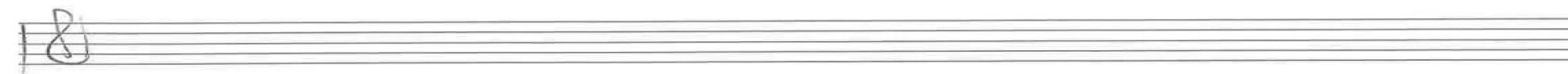
your name in rhyme your fame sur-pass-ing!



The hum-ble wan-der to and fro



but what they grow they'll be a-mass-ing.



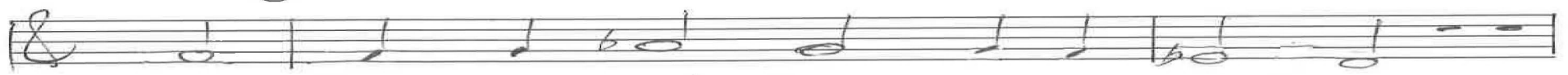
P. 2/3 Psalm 138 Chris Nelson 2017

ALL

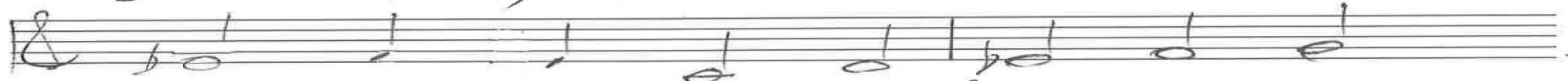


3. Though I exist in pain and strife

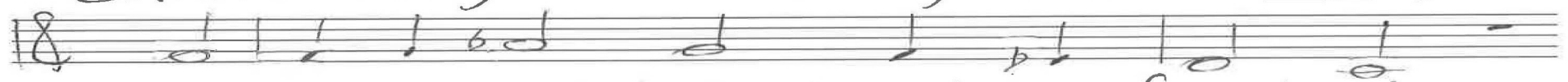
11-20
4-22



you keep my life full and a-bound-ed.



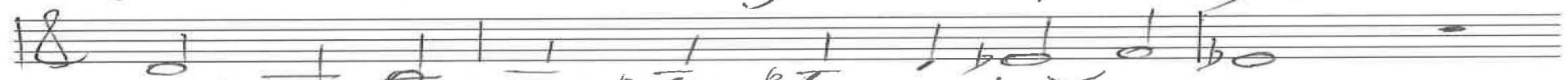
Stretch out your hand to flus-ter these,



my en-e-mies, dazed and con-found-ed.



From love on which your sheep re-ly



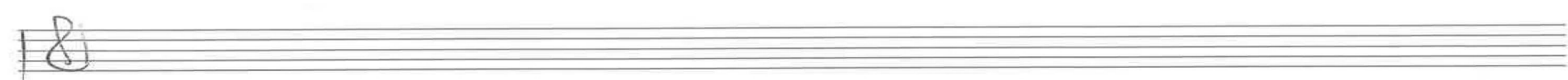
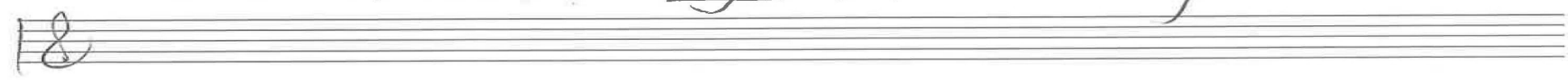
no low or high can ever take us.



Now bring them back, the ones you've made,



when all have strayed, and don't for-sake us.



p. 2/3

Psalm 138
Chris Nelson 2017

ALL

Intonation

1. Thanks to the Lord

10-19
11-20
8-21
4-22
10-22
7-23
2-24

In B^b

W Inc (pair: v. 3)

2. Kings on the earth

Organ p. 1/3 Psalm 138 Chris Nelson 2017

Handwritten musical notation for the first system, featuring a treble and bass staff with notes and chords.

10
11
19
20
8-21
4-22
10-22
7-23
2-24

Organ

Handwritten musical notation for the second system, featuring a treble and bass staff with notes and chords.

in verse sublime

Handwritten musical notation for the third system, featuring a treble and bass staff with notes and chords.

ALL In 9 (v. 1) Though

Handwritten musical notation for the fourth system, featuring a treble and bass staff with notes and chords.

I exist

whole tone

Handwritten musical notation for the fifth system, featuring a treble and bass staff with notes and chords.

P. 2/3
Psalm 138
Chris Nelson 2017

Handwritten musical notation for the first system, featuring a treble clef and a 3/4 time signature. The notation includes a melodic line with notes and rests, and a bass line with chords. A handwritten "4" appears below the first two measures. The word "express." is written above the final measure.

Handwritten musical notation for the second system, featuring a bass clef and a 3/4 time signature. The notation includes a bass line with chords and a treble line with notes. A handwritten "4" appears below the first two measures.

10-19
11-20
8-21
7-22
10-22
7-23
2-24

Handwritten musical notation for the third system, featuring a treble clef and a 3/4 time signature. The notation includes a melodic line with notes and rests, and a bass line with chords. A handwritten "2" appears below the first measure.

Handwritten musical notation for the fourth system, featuring a bass clef and a 3/4 time signature. The notation includes a bass line with chords and a treble line with notes.

Handwritten musical notation for the fifth system, featuring a treble clef and a 3/4 time signature. The notation includes a melodic line with notes and rests, and a bass line with chords. A handwritten "msw" with a downward arrow is above the final measure.

Handwritten musical notation for the sixth system, featuring a bass clef and a 3/4 time signature. The notation includes a bass line with chords and a treble line with notes. A handwritten "msw" is above the final measure.

Blank musical notation for the seventh system, consisting of a treble clef and a bass clef staff.

Blank musical notation for the eighth system, consisting of a treble clef and a bass clef staff.

Organ p. 3/3
Psalm 138
Jimmie Nelson