

# While Traveling

## Luke 17

Chris Nelson 2017

Chris Nelson 2017

9-19  
11-20  
4-22  
7-23

# Intonation

1. While traveling to Je-ru-sa-lem

our Lord preferred the bor-der.

The jour-ney was a strat-a-gem

for serv-ice, made-to-or-der.

And there where deal-ers buy and sell

ten lep-ers met the Mas-ter

moved by the sight who bid them tell

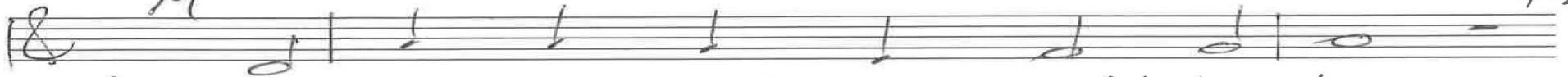
the priests of their dis-as-ter.

p. 1/3 Luke 17 Chris Nelson 2017

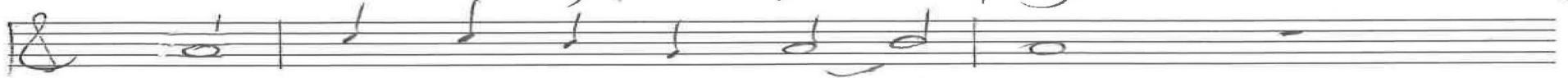
18

9-19  
11-26  
7-22

M



2. Now as they went, their plight to show,



the lep-ros-y was treat-ed.

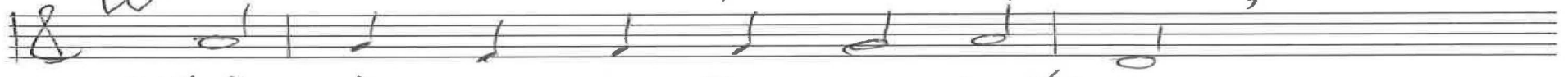


And one, who felt the heal-ing glow,

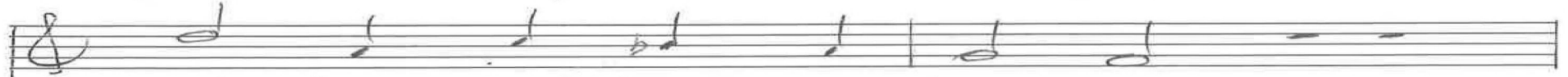


re-turned, with pain de-plet-ed.

W



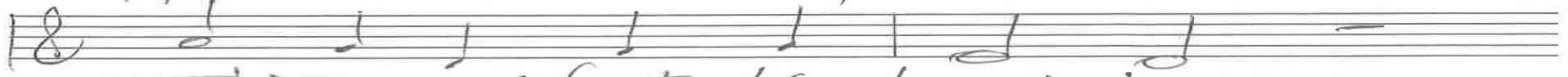
This win-ner, a Sa-mar-i-tan,



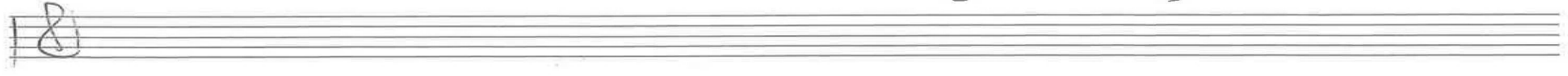
would fall, a-live and liv-ing,



prone, as the hum-ble pub-li-can,



at Je-sus' feet, thanks giv-ing.



p. 2/3 Luke 17 Chris Nelson 2017

18

9-19  
11-20  
4-22

ALL

3. "Were ten of them, in fact, re-stored?"

Do nine re-main in dan-ger?

It seems that no one praised the Lord

ex-cept this for-eign stran-ger.

No ho-ly men in Is-ra-el

would fa-athom such con-vic-tion.

Faith brought you here, and made you well,

re-ceive my ben-e-dic-tion."

18

p. 3/3 Luke 17 Chris Nelson 2017

Intonation  
Gt

Gm 91

ALL

1. # White

In d

|       |
|-------|
| 10-19 |
| 11-20 |
| 8-21  |
| 4-22  |
| 10-22 |
| 7-23  |
| 2-24  |

express.

2. Now

the leprosy was treated

Organ p. 1/3  
Luke 17  
Chris Nelson 2017

Handwritten musical notation for the first system, featuring a treble clef staff and a bass clef staff. The bass staff contains complex chordal structures with various accidentals (sharps, flats, naturals) and includes a handwritten list of numbers on the right side: 10-19, 11-20, 8-21, 4-22, 10-22, 7-23, and 2-24. A 'W' is written below the first measure of the bass staff.

Handwritten musical notation for the second system, continuing the piece with treble and bass staves. The bass staff shows further chordal development with various accidentals.

Handwritten musical notation for the third system. The bass staff includes the handwritten annotation "3. were" above a measure and "In B<sup>b</sup>" below a measure. The treble staff has the word "ALL" written above it.

Handwritten musical notation for the fourth system, showing treble and bass staves with complex chordal patterns.

Handwritten musical notation for the fifth system, the final system on the page, with treble and bass staves.

Organ p. 2/3 Luke 17 Chris Nelson 2017

Handwritten musical notation for the first system, featuring treble and bass clefs, notes, rests, and dynamic markings such as "express".

10-19  
11-20  
8-21  
4-22  
10-22  
7-23  
2-24

Handwritten musical notation for the second system, including treble and bass clefs, notes, rests, and various chordal annotations.

Handwritten musical notation for the third system, starting with the instruction "Subito" and "L.H.", and including treble and bass clefs.

Empty musical staves for the fourth system, consisting of treble and bass clefs.

Empty musical staves for the fifth system, consisting of treble and bass clefs.

Organ p. 3/3 / Luke 17  
Chris Nelson 2017