

Now gather round
Luke 16

9-19
11-20
4-22

Chris Nelson 2017

Chris Nelson 2017



Intonation

ALL



1. Now gath-er round and hear a fa-ble.



Here was a no-ble-man at ta-ble,



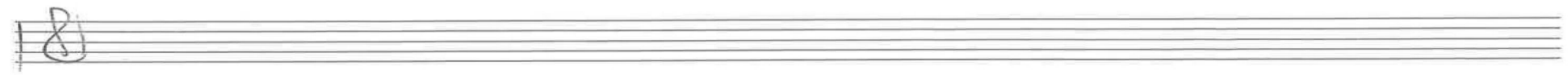
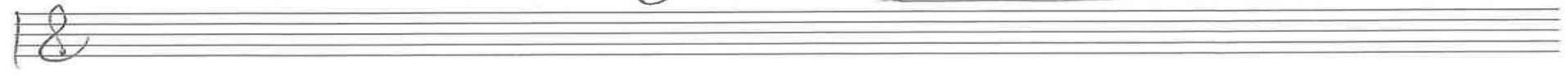
and Laz-a-rus, who tried for meat,



reached for a crumb, com-plete-ly a-ble,



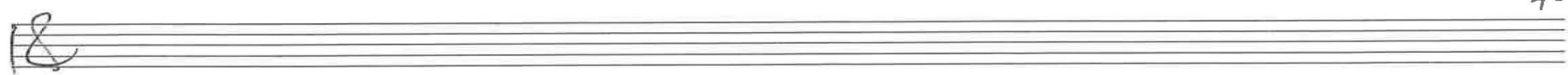
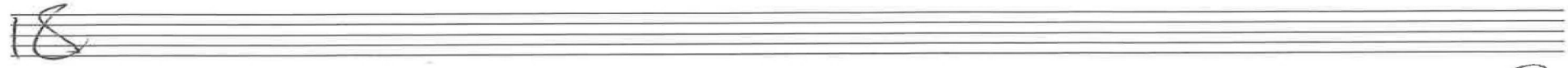
un-want-ed things a dog would eat;



p. 1/6 Luke 16 Chris Nelson 2017

9-19
11-20
4-22

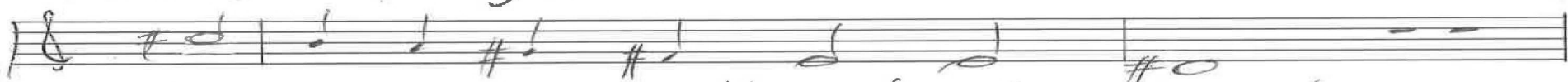
P. 2/6 Luke 16 Chris Nelson 2017



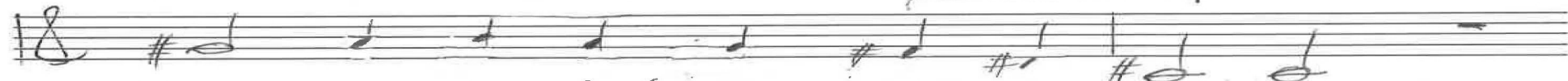
2. Be-side the gate this pau-per tar-ried.



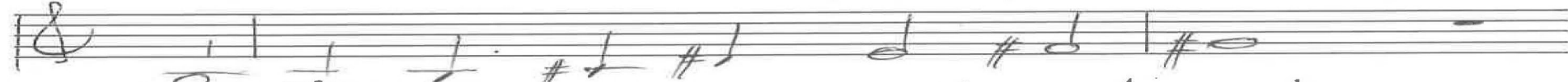
Then at the gates of death, on-car-ried



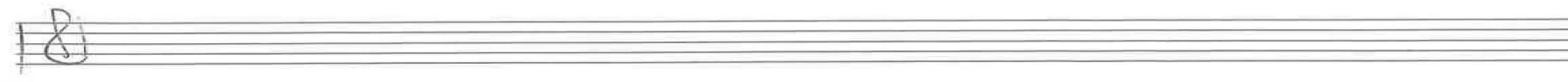
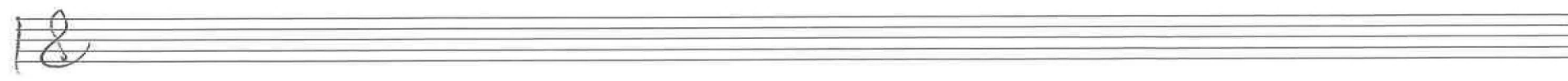
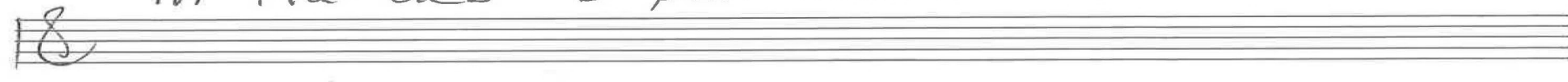
to A-bra-ham, all out-cries ceased.



Then was the rich man, du-ly bur-ied,



in Ha-des' o-pen mouth re-leased.



9-19
11-20
4-22
7-23

P. 3/6 Luke 16 Chris Nelson 2017

Handwritten musical score on ten staves. The first staff has a treble clef and a common time signature. The second staff is empty. The third staff begins with the word "ALL" above the staff. The lyrics are written below the notes on the staves. The music is in a key with one sharp (F#) and a common time signature. The lyrics are: "3. Tor-ment-ed, hot be-com-ing hot-ter, look-ing at hea-ven which could tot-ter. My fath-er, let your mer-cy rule, Send here my Laz-a-rus with wa-ter and give my tongue a res-pite cool."

ALL
3. Tor-ment-ed, hot be-com-ing hot-ter,
look-ing at hea-ven which could tot-ter.
My fath-er, let your mer-cy rule,
Send here my Laz-a-rus with wa-ter
and give my tongue a res-pite cool.

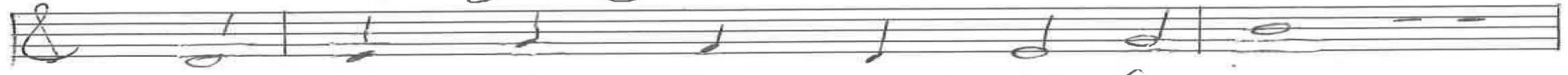


4. "My son, in life you came out boss-ing,

9-19
11-20
4-22



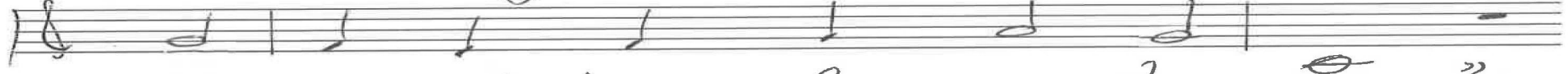
back would you go, some mor-sels toss-ing,



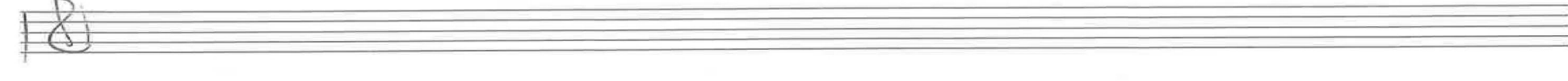
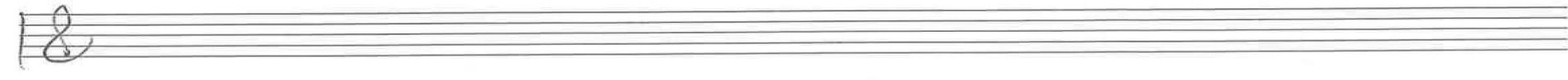
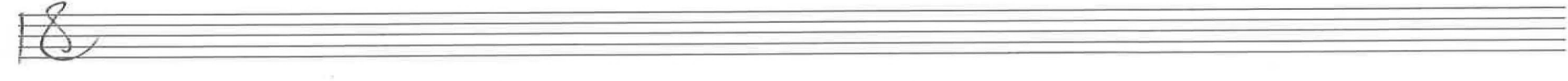
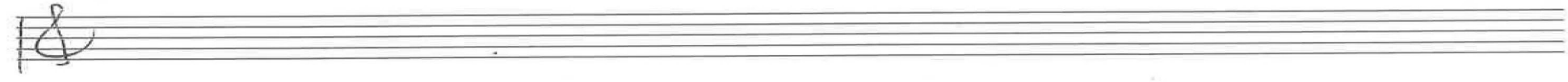
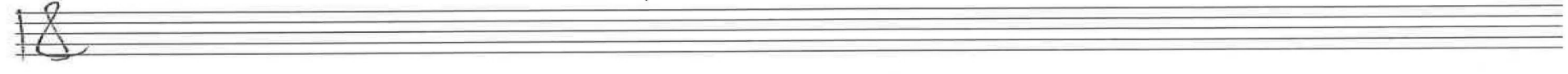
but you'll have sores in-stead of cures.



Fixed is a gulf which stops a cross-ing



of serv-ant types from ours to yours."

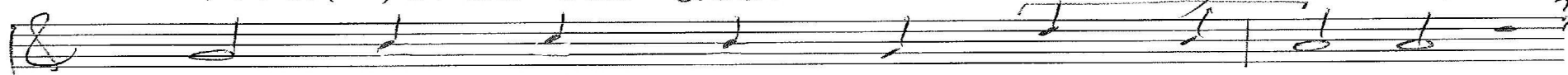


p. 4/6 Luke 16 Chris Nelson 2017



5. Then force our door that u-sually closes,

9-19
11-20
4-22
7-23



wake them with preach-ing that ex-pos-es



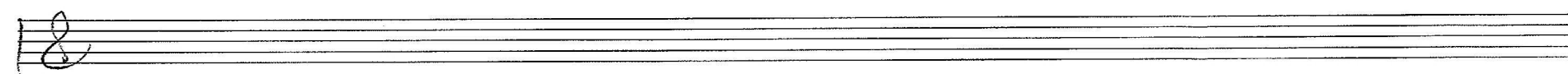
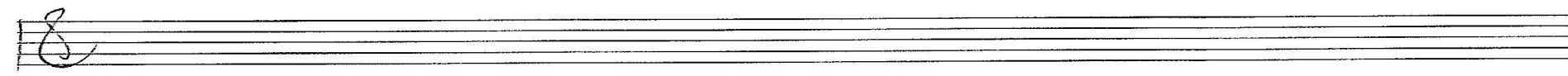
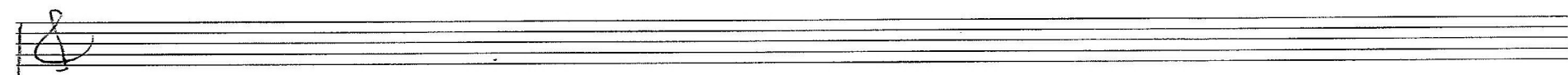
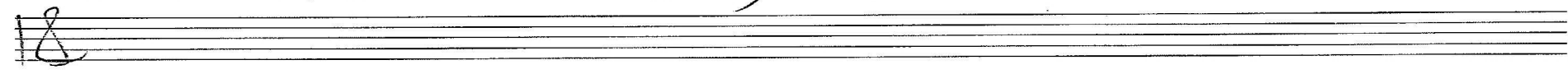
the chance that they might come here too.'



"Let them em-brace the law of Mo-ses,

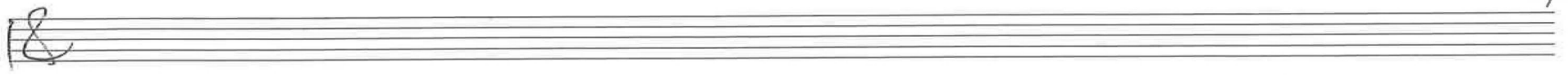
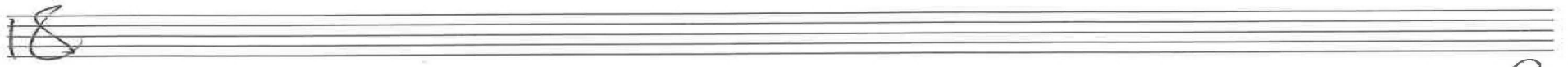


and life that eve-ry heart is due."

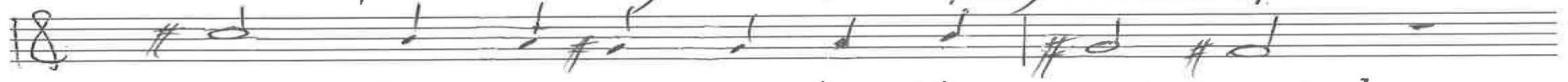


P. 5/6 Luke 16 Chris Nelson 2017

9-19
11-20
4-22



6. 'Re-pent they will, if they are aid-ed,



helped by a mir-a-cle they raid-ed.'



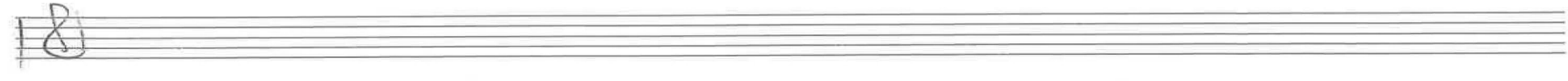
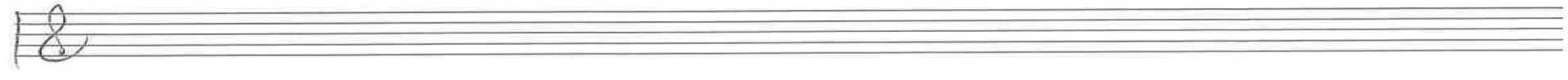
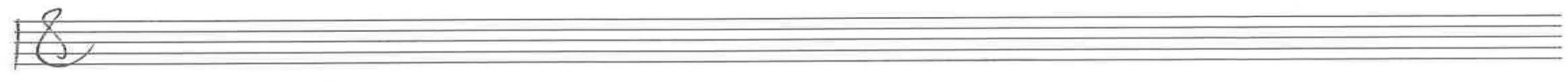
'If they won't hear what pro-phets said,



nor will your broth-ers be per-suad-ed



should some-one rise who once was dead."



p. 6/6 Luke 16 Chris Nelson 2017

Intonation
G⁺

ALL

1. Now gather

10-19
1-20
11-20
8-21
4-22
10-22
7-23
2-24

In d, Genevan 143

W

2. Beside the gate

In f#

Organ p. 1/4
Luke 16
Chris Nelson 2017

ALL

3. Tormented

In C

10-19
1-20
11-20
8-21
4-22
10-22
7-23
2-24

4. My son

In C

Organ P. 2/4 Luke 16 Chris Nelson 2017

Handwritten musical notation for the first system, featuring a treble clef and a bass clef. The music includes a melodic line in the treble and a chordal accompaniment in the bass. A tempo marking "5. Then forcē" is present, along with a measure rest marked "10-19".

5. Then forcē
 10-19
 8va 1-20
 11-20
 8-21
 4-22
 10-22
 7-23
 2-24

Handwritten musical notation for the second system, continuing the piece with similar notation and accompaniment.

Handwritten musical notation for the third system, featuring more complex chordal textures in the bass line.

Handwritten musical notation for the fourth system, including a tempo marking "6. Repent" and a measure rest marked "ALL".

Handwritten musical notation for the fifth system, concluding the piece with similar notation and accompaniment.

Organ p. 3/4
 Luke 16
 Chris Nelson 2017

Handwritten musical notation for the first system, featuring a treble clef staff with a melody and a bass clef staff with chords. The key signature is one sharp (F#). The notation includes various notes, rests, and accidentals. The label "Gm 143" is written above the bass staff.

10-19
1-20
4-20
8-21
4-22
10-22
7-23
2-24

Handwritten musical notation for the second system, continuing the melody and chords. The label "Swf" is written above the treble staff. The notation includes various notes, rests, and accidentals.

Empty musical staves for the third system, consisting of a treble clef staff and a bass clef staff.

Empty musical staves for the fourth system, consisting of a treble clef staff and a bass clef staff.

Empty musical staves for the fifth system, consisting of a treble clef staff and a bass clef staff.

Organ p. 4/4 Luke 16 Chris Nelson 2017