

Have mercy, O God

Psalm 51

11-19
4-21
9-22
4-23

Chris Nelson 2018 Chris Nelson 2018

Musical notation for the first line of the piece.

Intonation

Musical notation for the intonation section, starting with the word "ALL" written above the staff.

Musical notation for the first line of the lyrics: "1. Have mercy, O God, let your servant be"

Musical notation for the second line of the lyrics: "fed by your inward goodness and devotion."

Musical notation for the third line of the lyrics: "Treat me with insight, swelling like an ocean,"

Musical notation for the fourth line of the lyrics: "let me be dead to sin, a creature free."

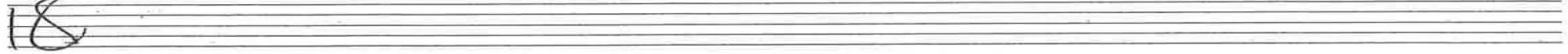
Musical notation for the fifth line of the lyrics: "My powers are snared by your strong defense,"

Musical notation for the sixth line of the lyrics: "just and impartial, sentencing surreption."

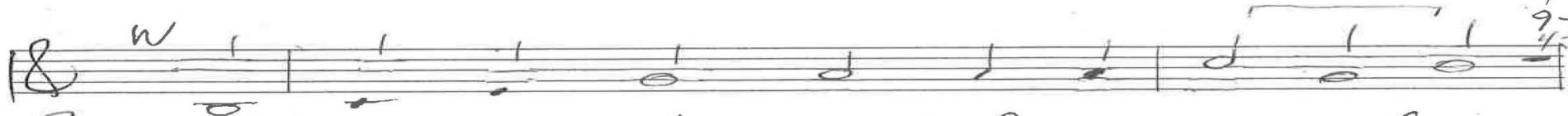
Musical notation for the seventh line of the lyrics: "I'm always ignoring your common sense,"

Musical notation for the eighth line of the lyrics: "failing the very moment of conception."

P. 1/4 Psalm 51
Chris Nelson 2018



11-19
4-21
9-22
4-23



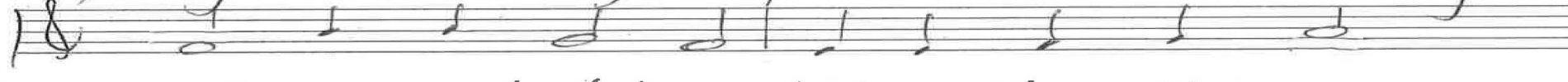
2. Yet, since you're the source of an over-flow,



teach me these cret's wis-dom is em-brac-ing.



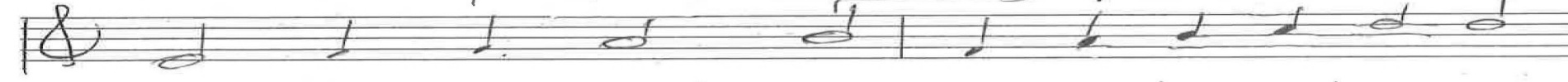
Purge me with hys-sop, blem-ish-es e-ras-ing,



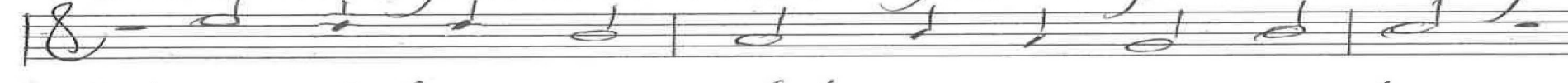
wash me un-til I'm whit-er than the snow,



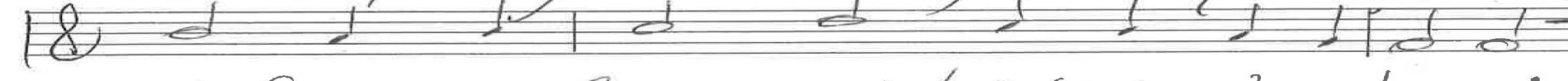
and let me per-form with the great-est ease,



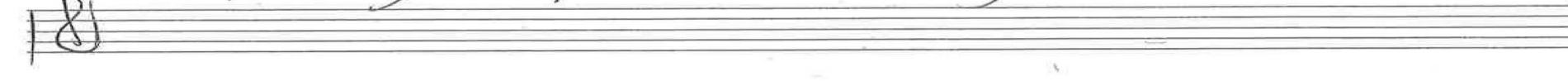
bones that you crushed be glad to go on danc-ing.



Blot out from your slate my in-i-gui-ties,



let from your face some bright-ness bead-varnc-ing.



p. 2/4 Psalm 51
Chris Nelson 2018

11-19
4-25
9-22

M

3. God, put a clean heart in my waiting soul,

filled with your new-ly-won e-man-cipa-tion,

pow-er-ed by your spir-it's ho-ly con-fir-ma-tion,

yours the sal-va-tion ev-er be my goal.

My sav-ior, be pleased with my ea-ger-ness,

keep my in-ten-tions con-fi-dent and will-ing.

The truth I'll dis-pense is your own, no less,

how you're the way, all right-eous-ness ful-fill-ing.

p. 3/4 Psalm 51

Chris Nelson 2018

18

11-19
4-21
9-22

ALL
Musical notation for the first line of the song.

4. And save me, O God, from a sud-den death,
Musical notation for the second line of the song.

as I in-sist on full par-ti-ci-pa-tion,
Musical notation for the third line of the song.

as you in-struct my mind for med-i-ta-tion,
Musical notation for the fourth line of the song.

Songs on my lips and wor-ship on my breath.
Musical notation for the fifth line of the song.

My ef-forts can play not the slight-est part,
Musical notation for the sixth line of the song.

not cheer you up, not make you more de-light-ed.
Musical notation for the seventh line of the song.

A sa-cri-fice fired by a brok-en heart,
Musical notation for the eighth line of the song.

just what you're short of, just what you in-vited.
Musical notation for the ninth line of the song.

p. 4/4
Psalm 51

Chris Nelson 2018

Intonation
Gt

1. Have mercy

4-19
12-19
4-21
12-20
9-22
4-23
12-23

Detailed description: This system contains two staves of handwritten musical notation. The top staff is in treble clef with a 2/4 time signature. It begins with a whole rest, followed by a series of eighth and quarter notes: G4, A4, B4, C5, B4, A4, G4. The bottom staff is in bass clef and shows chordal accompaniment with various accidentals (sharps, flats, naturals) and stems. The text 'Intonation' and 'Gt' is written on the left, and '1. Have mercy' is written on the right. A column of numbers (4-19, 12-19, 4-21, 12-20, 9-22, 4-23, 12-23) is on the far right.

In c (Gen. 7)

Organ p: 1/4

Detailed description: This system contains two staves of handwritten musical notation. The top staff is in treble clef with a 2/4 time signature. It begins with a whole rest, followed by a series of eighth and quarter notes: G4, A4, B4, C5, B4, A4, G4. The bottom staff is in bass clef and shows chordal accompaniment with various accidentals and stems. The text 'In c (Gen. 7)' is written on the right, and 'Organ p: 1/4' is written vertically on the far right.

Psalm 51

Detailed description: This system contains two staves of handwritten musical notation. The top staff is in treble clef with a 2/4 time signature. It begins with a whole rest, followed by a series of eighth and quarter notes: G4, A4, B4, C5, B4, A4, G4. The bottom staff is in bass clef and shows chordal accompaniment with various accidentals and stems. The text 'Psalm 51' is written vertically on the far right.

Chris Nelson 2023

Detailed description: This system contains two staves of handwritten musical notation. The top staff is in treble clef with a 2/4 time signature. It begins with a whole rest, followed by a series of eighth and quarter notes: G4, A4, B4, C5, B4, A4, G4. The bottom staff is in bass clef and shows chordal accompaniment with various accidentals and stems. The text 'Chris Nelson 2023' is written vertically on the far right.

W

20

Detailed description: This system contains two staves of handwritten musical notation. The top staff is in treble clef with a 2/4 time signature. It begins with a whole rest, followed by a series of eighth and quarter notes: G4, A4, B4, C5, B4, A4, G4. The bottom staff is in bass clef and shows chordal accompaniment with various accidentals and stems. The text 'W' and '20' is written on the right.

Handwritten musical score for the first system. The top staff is a vocal line in treble clef, and the bottom staff is an organ accompaniment in bass clef. The lyrics "Yet since" are written under the vocal line. On the right side, there is a vertical list of numbers: 4-19, 12-19, 4-21, 12-21, 9-22, 4-23, and 12-23.

In a, v. l inverted

Organ p. 2/4

Handwritten musical score for the second system, continuing the organ accompaniment in bass clef.

Handwritten musical score for the third system, continuing the organ accompaniment in bass clef.

Psalms 51

Handwritten musical score for the fourth system, continuing the organ accompaniment in bass clef.

Chris Nelson 2023

In f M O God, O Lord of heav'n and earth

Handwritten musical score for the fifth system. The top staff is a vocal line in treble clef with the lyrics "God, put". The bottom staff is an organ accompaniment in bass clef.

4-19
12-19
4-21
(2-21
9-22
4-23
12-23

The truth I'll dispense is your own
ALL

4. And save me

In a, Generan 51

Organ P. 3/4

Psalms 51

Chris Nelson 2019

4-19
12-19
4-21
12-21
9-22
4-23
12-23

Organ p. 4/4

Psalm 51

Chris Nelson, 2019