

18 Lord, how much longer
Psalm 13

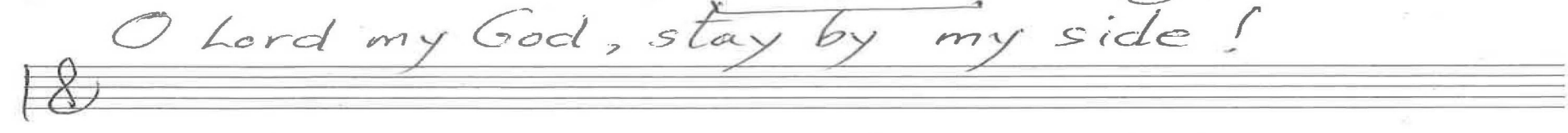
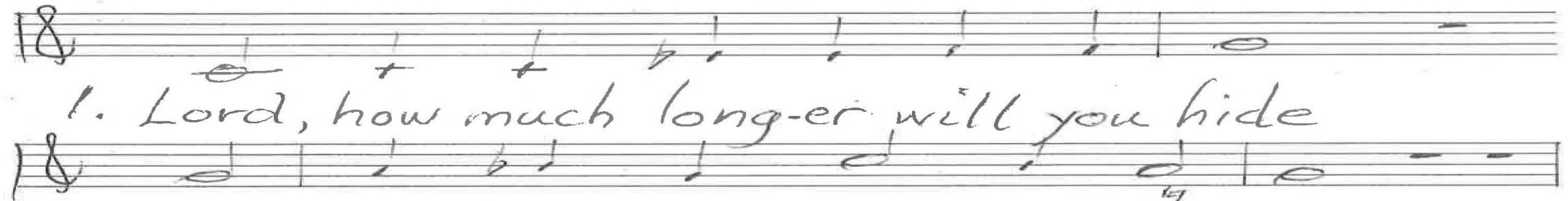
4-21
9-22

18 Chris Nelson 2018

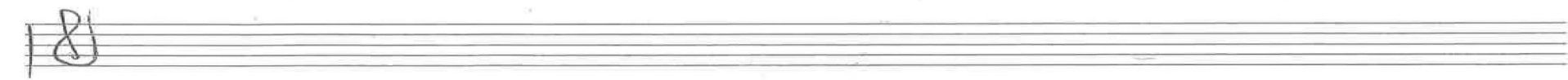
Chris Nelson 2018



p. 1/2 Psalm 13



Chris Nelson 2018



18

9-21
9-22

18

2. Close to the light my eyes would cling

18

when death is at large with its sting.

18

Lord, by your lov-ing stim-u-la-tion

18

my heart would re-joice in sal-va-tion,

18

for all of your good-ness would sing.

18

18

18

18

P. 2/2
Psalm 13

Chris Nelson 2018

8 Intonation

1 2-19
4-21
12-21
9-22
4-23
12-23

1 Lord, how much longer

In C, Geneva 13

2. Close to the light

Creator of the stars of night In Eb

Organ p: 1/2

Psalms 13

Chris Nelson

Handwritten musical notation for the first system. The treble clef staff contains a melody with notes and rests. The bass clef staff contains chords and single notes. Annotations include "Gn 13" and various accidentals (flats, sharps, double flats). A small number "2" is written above the first measure of the treble staff.

12-19
4-21
12-21
4-22
4-23
12-23

Handwritten musical notation for the second system. The treble clef staff contains a melody. The bass clef staff contains chords. The word "Coda" is written in the treble staff. A small number "4" is written below the treble staff.

Handwritten musical notation for the third system. The treble clef staff contains a melody. The bass clef staff contains chords. Annotations include "Swb" and "express".

Empty musical staves for the fourth system, consisting of a treble clef staff and a bass clef staff.

Empty musical staves for the fifth system, consisting of a treble clef staff and a bass clef staff.

Organ p. 2/2

Psalms 13

Chris Nelson