

18 Attend you servants of the Lord
Psalm 113

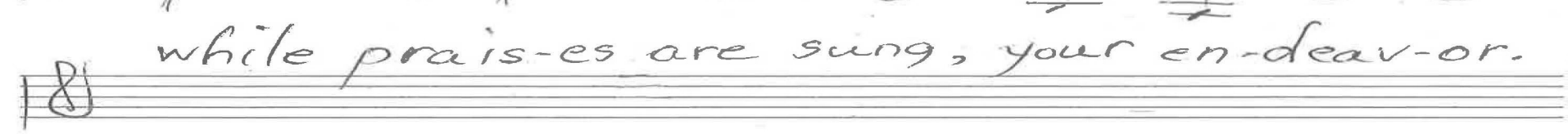
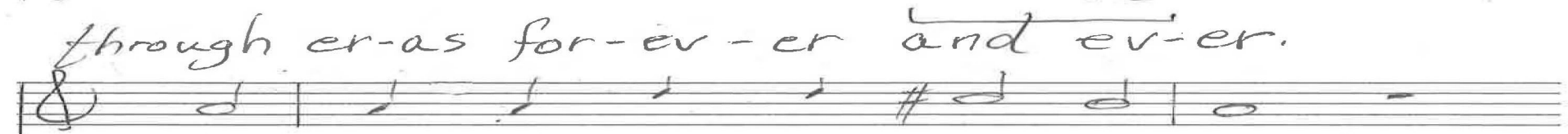
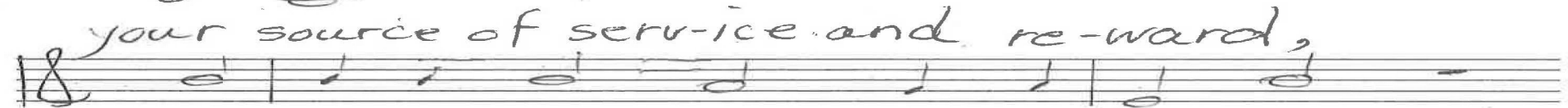
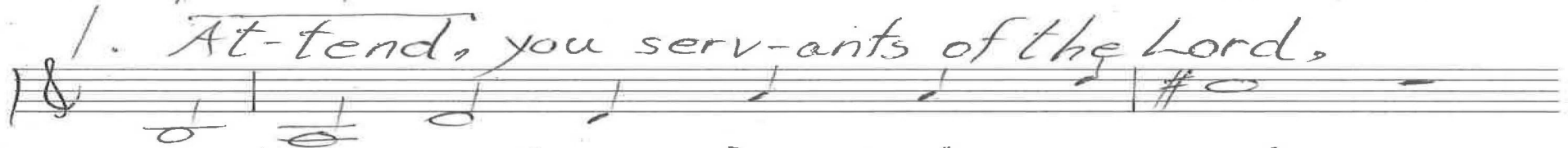
6-19
3-21
8-22

18 Chris Nelson 2018

Chris Nelson 2018



ALL Intonation



Psalm 113
Chris Nelson 2018

18

6-19
3-21
8-22

M
18

2. That throne is up above them all.

18

Do-min-ions, dom-in-ant and small,

18

from hea-ven like rain are de-scend-ing.

18

For who is like the Lord our God,

18

so high one needs to bow or nod

18

to see what our King is de-fend-ing?

18

18

18

P. 7/3 Psalm 113
Chris Nelson 2018

18

6-19
3-21
8-22

ALL

3. The poor are lift-ed from the dust,

the princ-es of their peo-ple must

en-list your con-trol of star-va-tion.

when pov-er-ty is forced to roam,

the bar-ren has a seat at home,

a sev-en-fold rise in her sta-tion.

Coda

P. 3/3 Psalm 113 Chris Nelson 2018

Intonation

ALL

1. Attend

6-19
12-19
6-20
3-21
12-21
8-22
7-23
12-23

Lord Jesus, you shall be my song as I journey In D

2. That throne

In G, Geneva 113

Organ p. 1/3
Psalm 113
Chris Nelson 2020

6-19
12-19
6-20
3-21
12-21
8-22
4-23
12-23

one needs to bow or nod

ALL

(ext) 4 3 The poor

In D (v. 1)

Coda

(Gn. 113)

Organ p. 2/3
Psalm 113
Chris Nelson 2020

Handwritten musical notation for the first system. The treble staff contains a triplet of eighth notes. The bass staff contains chords with some handwritten annotations.

6-19
12-19
6-20
3-21
12-21
8-22
9-23
12-23

Organ p. 3/3

Psalm 113

Chris Nelson 2020

Handwritten musical notation for the second system, showing a treble and bass staff with a few notes and rests.

Handwritten musical notation for the third system, showing a treble and bass staff with a few notes and rests.

Handwritten musical notation for the fourth system, showing a treble and bass staff with a few notes and rests.

Handwritten musical notation for the fifth system, showing a treble and bass staff with a few notes and rests.