

On the sanctuary floor

Psalm 150

Chris Nelson 2018 Chris Nelson 2018

8-19
3-21
8-22

Intonation

Intonation musical staff

1. On the sanc-tu-ary floor

marching grand-ly through the door

go the can-tors all a-round

as the dome re-ceive-s the sound,

Al-le-lu-ia, al-le-lu-ia!

with the fan-fares of the choir

drown-ing out the harp and lyre,

Al-le-lu-ia, al-le-lu-ia!

Al-le-lu-ia, al-le-lu-ia!

Al-le-lu-ia, al-le-lu-ia!

Al-le-lu-ia, al-le-lu-ia!

Al-le-lu-ia, al-le-lu-ia!

Al-le-lu-ia, al-le-lu-ia!

Al-le-lu-ia, al-le-lu-ia!

P. 1/2 Psalm 150 Chris Nelson 2018

18

Interlude - Genevan 150

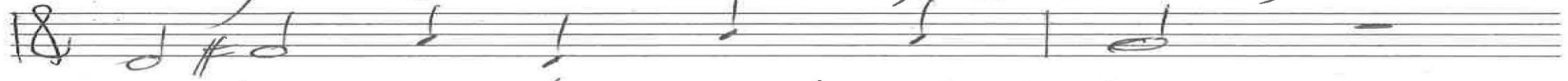
8-19
3-21
8-22



2. Praise the Lord with drum and dance,



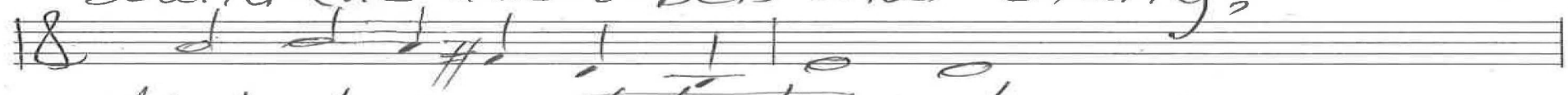
with your tam-bou-rines, ad-vance,



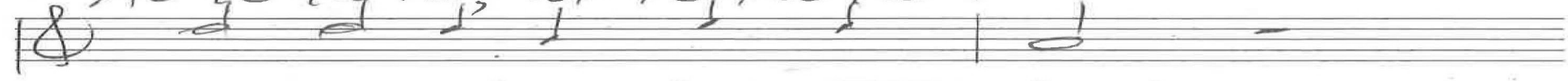
once those in-stru-ments that bang



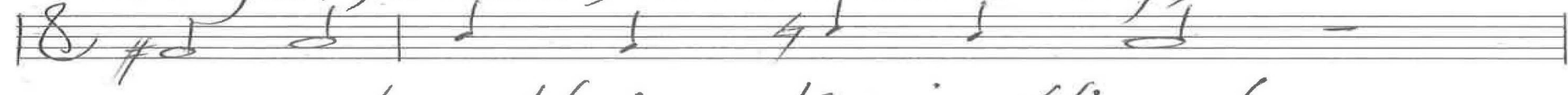
sound the dec-i-bels that clang,



Al-le-lu-ia, at-te-tu-ja!



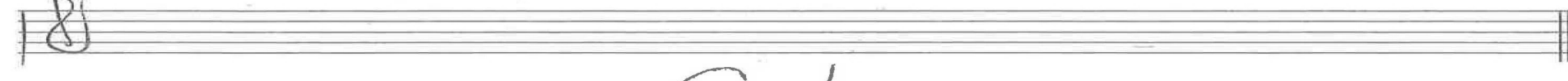
or-gan, o-boe, horn and string,



ev-ery breath-ing, liv-ing thing!



Al-le-lu-ia, al-le-lu-ia!



Coda

p. 2/2 Psalm 150 Chris Nelson 2018

alleluia, alleluia!

Intonation 1. On the sanctuary floor

6-19
12-19
3-21
12-21
8-22
4-23
12-23

Alleluia! Voices Raise In D

In F, Genevan 150

Interlude.

Organ p. 1/3
Psalm 150
Chris Nelson 2018

6-19
12-19
3-21
12-21
8-22
1-23
12-23

Organ p. 2/3

Praise the Lord

Psalms 150

Chris Nelson

2018

Coda

6-19
12-19
3-21
12-21
8-22
4-23
12-23

alleluia, alleluia!

Organ p. 3/3

Psalm 150

Chris Nelson 2018