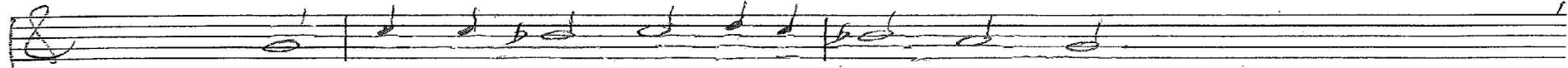


How happy are those
Chris Nelson 2017 Psalm 41 Chris Nelson 2017

11-19
10-20
3-22
1-24

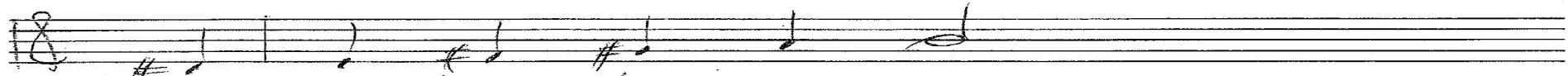


Intonation

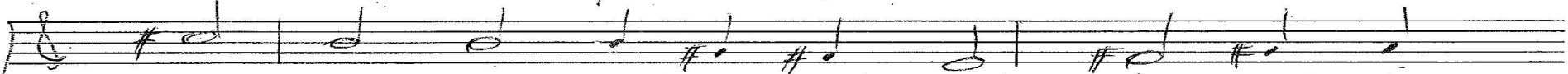
ALL



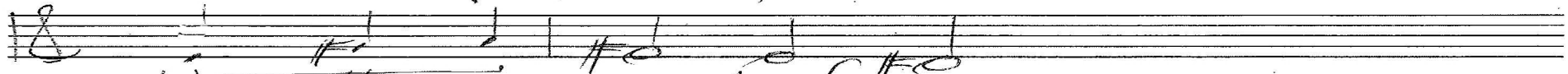
1. How hap-py are those who sup-port the poor



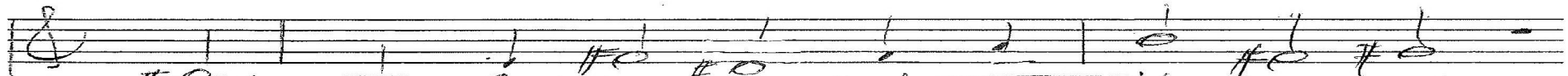
and ren-der them se-cure.



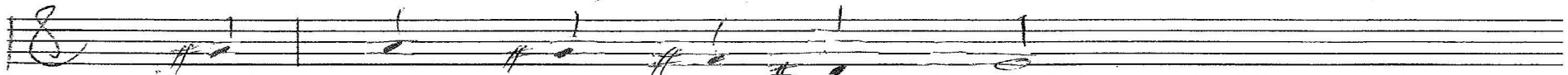
The Lord will en-ter with help when they're down,



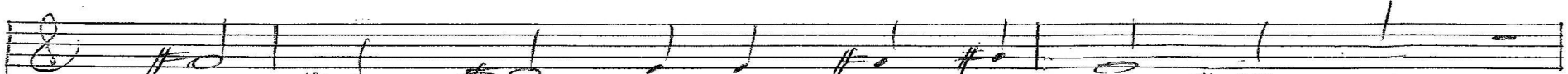
when oth-ers come to frown,



most care-ful-ly ease them and make their bed,



with hands up-on the head.



'On earth with pit-y you'd re-store my soul



to life and full con-trol.

p. 1/3 Psalm 41 Chris Nelson 2017

M
Handwritten musical notation on a single staff with a treble clef and a common time signature. The notes are: G4, A4, B4, C5, B4, A4, G4, F4, E4, D4, C4.

11-19
10-20
3-22

2. My en-e-mies chat-ter and won-der why

Handwritten musical notation on a single staff with a treble clef and a common time signature. The notes are: G4, A4, B4, C5, B4, A4, G4, F4, E4, D4, C4.

it takes so long to die.

Handwritten musical notation on a single staff with a treble clef and a common time signature. The notes are: G4, A4, B4, C5, B4, A4, G4, F4, E4, D4, C4.

With emp-ty com-fort, with lips that a-buse,

Handwritten musical notation on a single staff with a treble clef and a common time signature. The notes are: G4, A4, B4, C5, B4, A4, G4, F4, E4, D4, C4.

They love to spread the news.

Handwritten musical notation on a single staff with a treble clef and a common time signature. The notes are: G4, A4, B4, C5, B4, A4, G4, F4, E4, D4, C4.

And gas-sip-pers throw me an-oth-er curve:

Handwritten musical notation on a single staff with a treble clef and a common time signature. The notes are: G4, A4, B4, C5, B4, A4, G4, F4, E4, D4, C4.

I get what I de-serve,

Handwritten musical notation on a single staff with a treble clef and a common time signature. The notes are: G4, A4, B4, C5, B4, A4, G4, F4, E4, D4, C4.

ma-lig-nant sick-ness that may dim my eyes,

Handwritten musical notation on a single staff with a treble clef and a common time signature. The notes are: G4, A4, B4, C5, B4, A4, G4, F4, E4, D4, C4.

from which I'll nev-er rise.

Handwritten musical notation on a single staff with a treble clef and a common time signature. The notes are: G4, A4, B4, C5, B4, A4, G4, F4, E4, D4, C4.

Handwritten musical notation on a single staff with a treble clef and a common time signature. The notes are: G4, A4, B4, C5, B4, A4, G4, F4, E4, D4, C4.

p. 2/3 Psalm 41 Chris Nelson 2017

ALL

3. And even this friend who had shared my meal

has lift-ed up the heel. 11-19
10-20
7-22

En-cour-age me in this cal-lous at-tack,

and I will pay them back.

By this I'm con-vinced that you'll keep me close

from all that is mor-ose

when they have failed and I am set by you

in your e-ter-nal view.

p. 3/3 Psalm 41 Chris Nelson 2017

Intonation
Gt

On 41

1. How happy

ALL

In E

9	19
10	20
6	21
3	22
2	22
3	23
1	24

enemies chatter

2. My

In ct

Organ p. 1/3 Psalm 41 Chris Nelson 2023

Handwritten musical notation for the first system, featuring a treble clef staff with a melody and a bass clef staff with chords. The key signature has one sharp (F#).

9-19
10-20
6-21
3-22
7-22
5-23
1-24

Handwritten musical notation for the second system, continuing the melody and chords from the first system.

ALL

3. And even this friend

In c, Genevan 41

Handwritten musical notation for the fourth system, continuing the piece.

Handwritten musical notation for the fifth system, concluding the piece.

Organ p. 2/3 Psalm 41 Chris Nelson 2017

Handwritten musical notation for the first system. The top staff is in treble clef and contains a sequence of notes: a whole note G4, a half note A4, a quarter note B4, a quarter note C5, a quarter note D5, a quarter note E5, a quarter note F5, and a quarter note G5. The bottom staff is in bass clef and contains a whole note chord (C4, E4, G4), a half note chord (C4, E4, G4), a quarter note chord (C4, E4, G4), and a quarter note chord (C4, E4, G4). There are also some additional markings and a bracket under the bottom staff.

9-19
 10-20
 6-21
 3-22
 9-22
 5-23
 1-24

Two empty musical staves for the second system, one in treble clef and one in bass clef.

Two empty musical staves for the third system, one in treble clef and one in bass clef.

Two empty musical staves for the fourth system, one in treble clef and one in bass clef.

Two empty musical staves for the fifth system, one in treble clef and one in bass clef.

Organ p. 3/3 Psalm #1 Chris Nelson 2017