

My hopes are rising  
Psalm 139

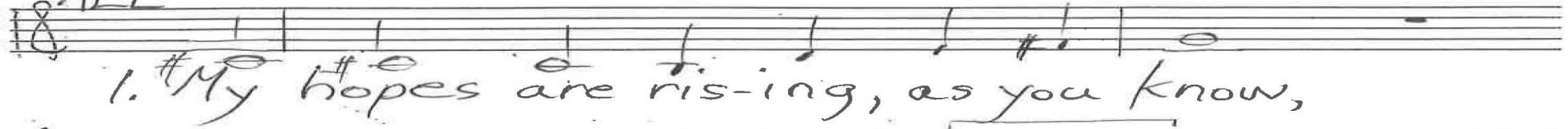
10-20  
3-22  
5-23

Chris Nelson 2017 Chris Nelson 2017



A musical staff in treble clef with a key signature of one sharp (F#). The notes are: F#4, G4, A4, B4, C5, B4, A4, G4, F#4, E4.

All Intonation



A musical staff in treble clef with a key signature of one sharp (F#). The notes are: F#4, G4, A4, B4, C5, B4, A4, G4, F#4, E4. The lyrics are: 1. My hopes are rising, as you know,



A musical staff in treble clef with a key signature of one sharp (F#). The notes are: F#4, G4, A4, B4, C5, B4, A4, G4, F#4, E4. The lyrics are: you're probing my heart as I grow,



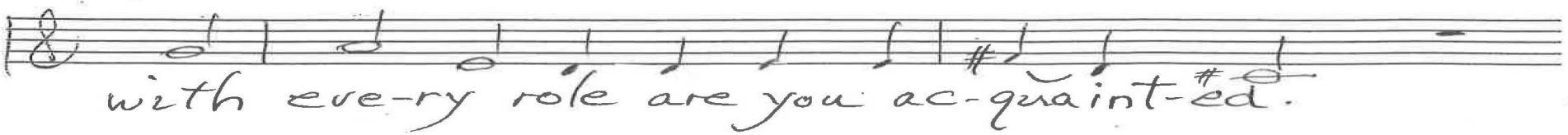
A musical staff in treble clef with a key signature of one sharp (F#). The notes are: F#4, G4, A4, B4, C5, B4, A4, G4, F#4, E4. The lyrics are: reading out, whether false or real,



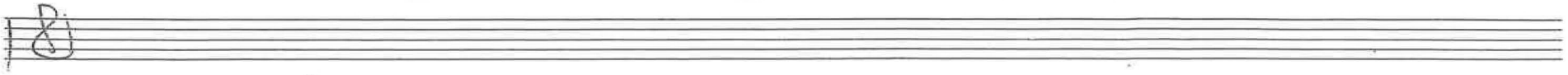
A musical staff in treble clef with a key signature of one sharp (F#). The notes are: F#4, G4, A4, B4, C5, B4, A4, G4, F#4, E4. The lyrics are: the gist of my thoughts, how I feel.



A musical staff in treble clef with a key signature of one sharp (F#). The notes are: F#4, G4, A4, B4, C5, B4, A4, G4, F#4, E4. The lyrics are: My conduct, talented or tainted,



A musical staff in treble clef with a key signature of one sharp (F#). The notes are: F#4, G4, A4, B4, C5, B4, A4, G4, F#4, E4. The lyrics are: with every role are you acquainted.



An empty musical staff in treble clef with a key signature of one sharp (F#).

P. 1/6 Psalm 139 Chris Nelson 2017

ALL



2. The word not ord-ered by my tongue

10-20  
3-22  
5-23



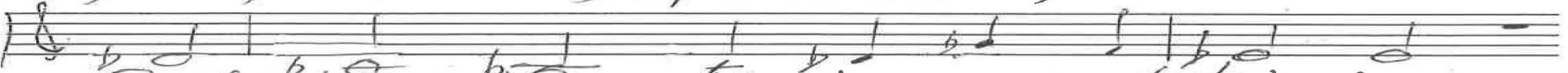
will nev-er be said or be sung.



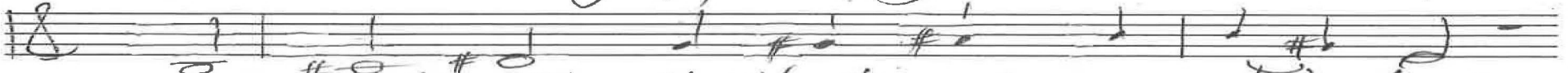
Yet you know how it all comes out,



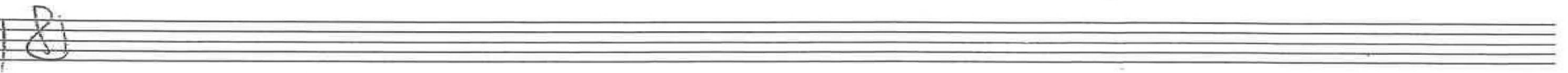
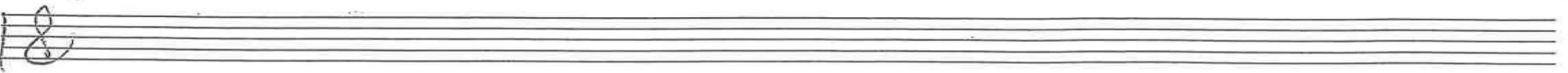
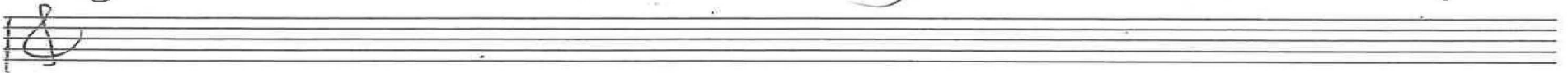
you fath-om my faith and my doubt.



Such know-ledge, far be-yond at-tain-ing,



gives worth To all that you're or-dain-ing.



P. 2/6 Psalm 139 Chris Nelson 2017



3. To flee from mar-vels you would show,

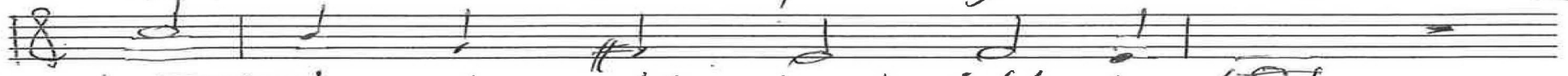
10-20  
3-22



from pur-pos-es, where could I go?



If I climbed up the peaks you made,



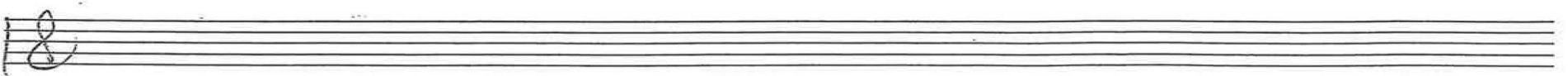
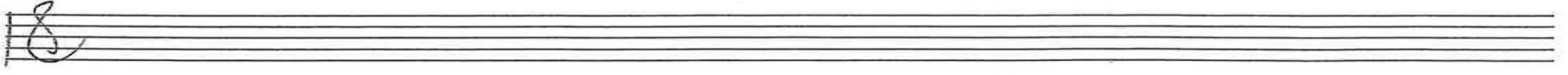
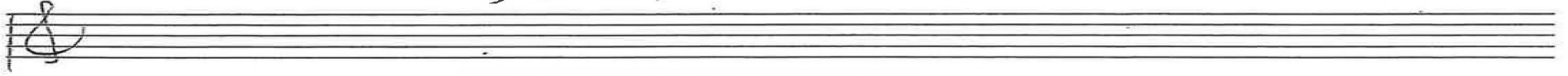
or down where the dead will be laid,



your right hand guid-ing like a men-tor,



the morn-ing por-tal where I'd en-ter?

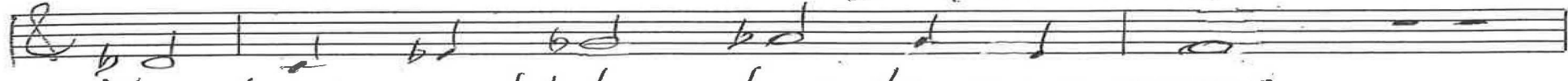


p. 3/6 Psalm 139 Chris Nelson 2017

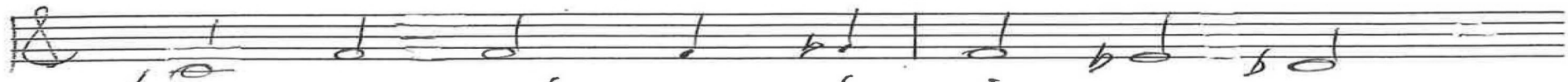


4. For if I asked the night to rise,

10-20  
3-22



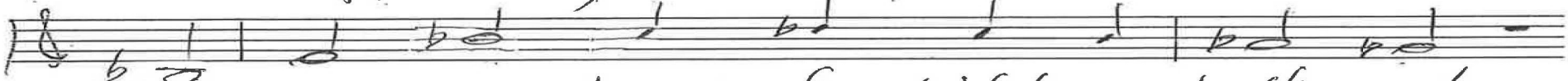
its dark would be clear to your eyes.



Lo, you made your de-sign as-sume



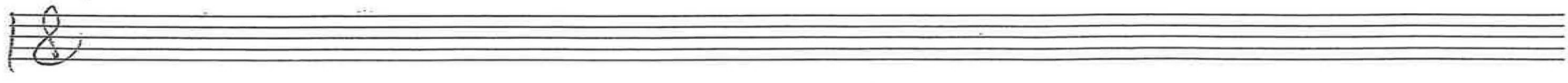
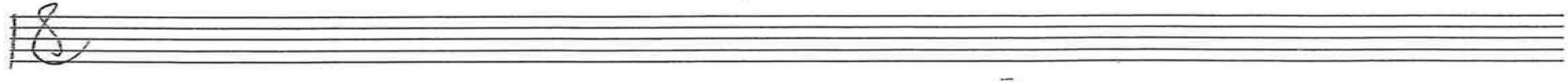
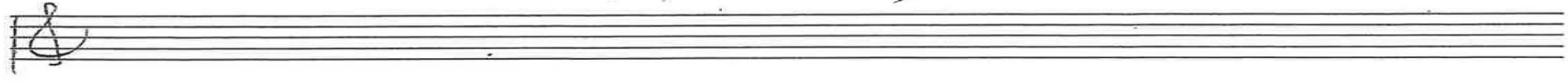
the shape of my life in the womb.



I thank you, Lord, for light and thun-der,



for what I am, for eve-ry won-der.



P. 4/6 Psalm 139 Chris Nelson 2017



ALL



5. You watched my na-ture be-ing warmed,

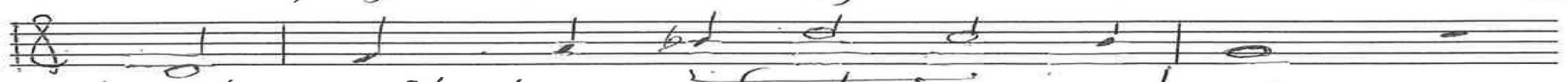
10-20  
8-22



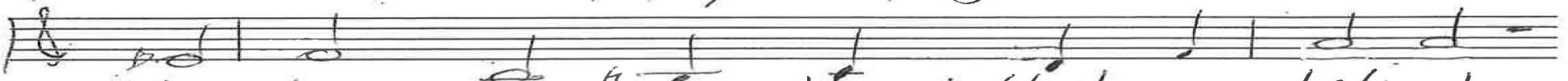
in lim-bo with care du-ly formed,



eve-ry feat, each ne-glect-ed nook,



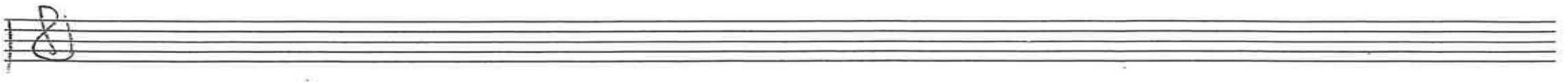
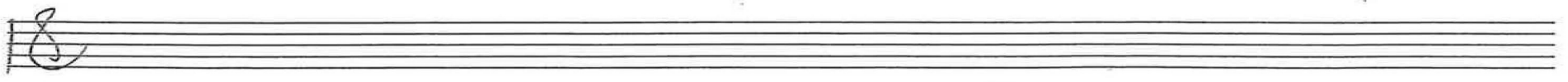
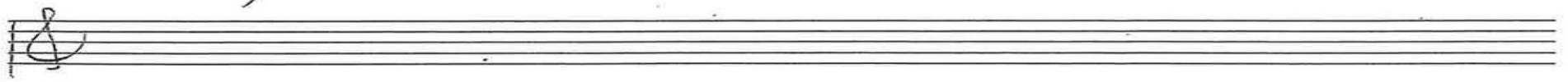
all scribed as a fact in your book,



the days you num-bered that were list-ed



be-fore these e/-e-ments ex-ist-ed.



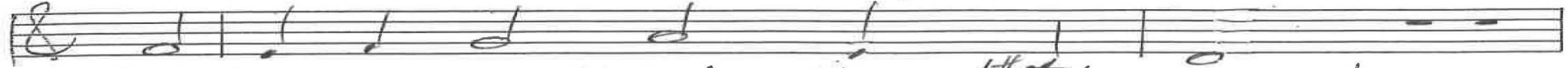
p. 5/6 Psalm 139 Chris Nelson 2017

ALL

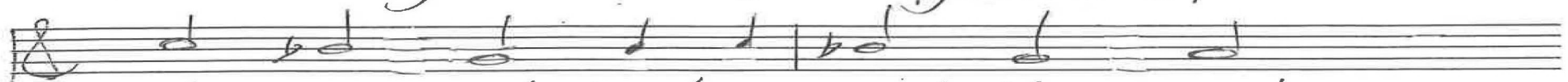


6. In-spired to search the mind of God,

10-20  
3-22  
5-23



to do as you think, though I'm awed,



let my goal be to count the sand,



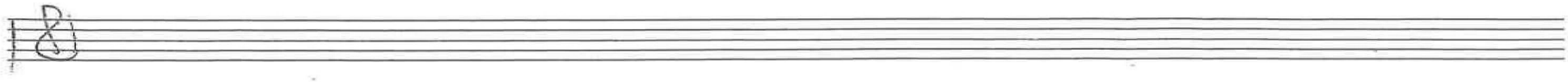
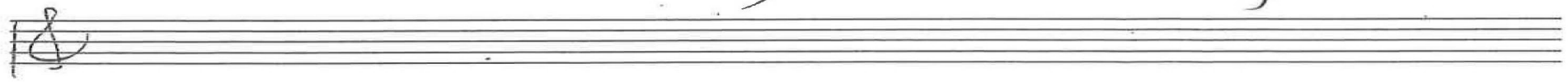
and, guessing I could, when I land,



be with me still in how you're cast-ing



di-rec-tions sure-ly ev-er-tast-ing.



P. 6/6 Psalm 139 Chris Nelson 2017

Intonation  
Gt

ALL  
1. My hopes

In b

10-19  
1-20  
10-20  
5-21  
3-22  
9-22  
5-23  
1-24

are rising

Organ p. 1/4

Psalm 139

ALL  
2. The word

In Ab

not ordered

Chris Nelson 2018

Handwritten musical score for the first system. The top staff is a vocal line with lyrics. The bottom two staves are a piano accompaniment consisting of chords. The key signature has one flat (B-flat).

10-19  
1-20  
10-20  
6-21  
3-22  
9-22  
10-22  
5-23  
1-24

Organ p. 2/4

Handwritten musical score for the second system. The vocal line includes the instruction "To flee" above it. The piano accompaniment continues with chords.

Handwritten musical score for the third system. The vocal line includes the instruction "from marvels" and the word "In e". The piano accompaniment continues with chords.

Psalm 139

Handwritten musical score for the fourth system. The vocal line includes the instruction "express" and "whole tone". The piano accompaniment continues with chords.

Chris Nelson: 2018

Handwritten musical score for the fifth system. The vocal line includes the instruction "In b' For if". The piano accompaniment continues with chords.

I asked

10-19  
1-20  
10-20  
6-21  
3-22  
9-22  
5-23  
1-24

Organ p. 3/4

ALL  
5. You watched

In B<sup>b</sup> (v. 2)

my nature

Psalms 139  
Chris Nelson : 2018



Handwritten musical notation for the first system, including a treble clef, a key signature of one flat, and a 4/4 time signature. The notation includes a melody line and a bass line with chords. The text "All" is written above the first measure, and "b. Inspired to search" is written above the second measure. The text "Ind (v. 1)" is written below the second measure.

10-19  
1-20  
10-20  
6-21  
3-22  
9-22  
5-23  
1-24

Organ P. 4/4

Handwritten musical notation for the second system, continuing the melody and bass line from the first system. The notation includes a treble clef, a key signature of one flat, and a 4/4 time signature.

Psalm 139

Handwritten musical notation for the third system, continuing the melody and bass line. The notation includes a treble clef, a key signature of one flat, and a 4/4 time signature.

Chris Nelson 2018

Handwritten musical notation for the fourth system, continuing the melody and bass line. The notation includes a treble clef, a key signature of one flat, and a 4/4 time signature.

Handwritten musical notation for the fifth system, continuing the melody and bass line. The notation includes a treble clef, a key signature of one flat, and a 4/4 time signature. The text "Sw" is written below the second measure.