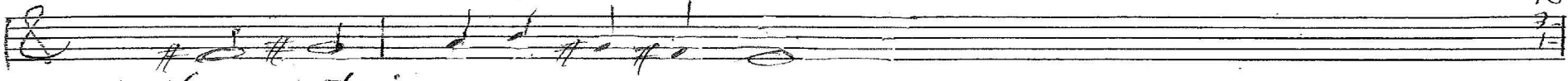


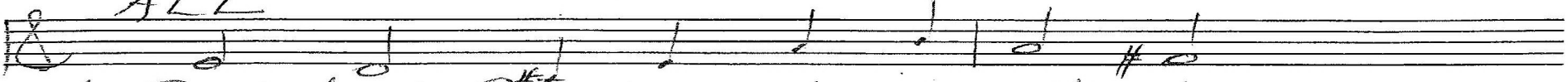
God had Gabriel

Chris Nelson 2017 Luke 1 Chris Nelson 2017

9-19
1-20
10-20
7-22
1-24



Intonation
ALL



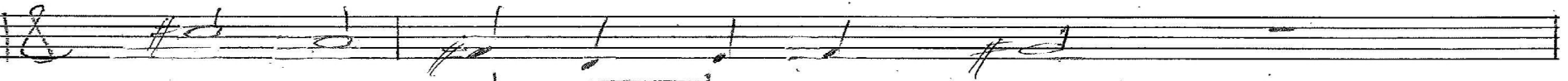
1. God had Ga-bri-el di-rect-ed



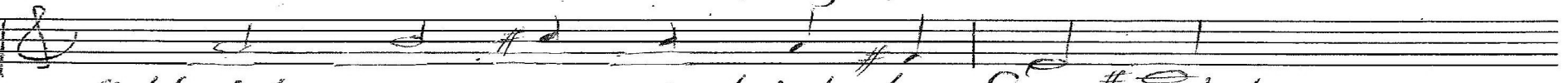
to a vil-lage; un-ex-pect-ed,



down to Mar-y on the earth



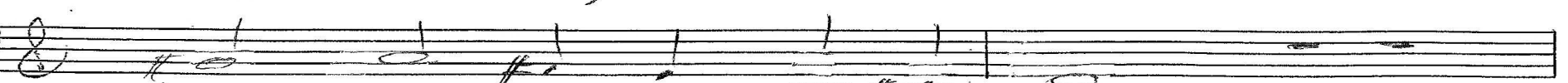
to an-nounce a vir-gin birth.



"Hail, you ves-sel high-ly fa-vored!



From your Lord you nev-er wa-vered."



Awed was she by this e-vent,



won-dering what 'no end-ing' meant.

P. 1/3 Luke 1 Chris Nelson 2017

M
2. "Do not fear my viv-id greet-ing,

9-19
1-20
10-20
3-22
5-23

God with you de-sires a meet-ing.

Lis-ten! You will bear a son

who'll be Jes-us when you're done,

W
Da-vid's vic-tor-ies in-her-it,

high-est ven-er-a-tion mer-it,

ov-er Is-ra-el to rule,

for the King-dom as a tool.

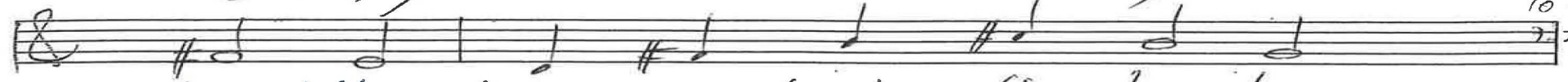
P. 2/3 Luke 1 Chris Nelson 2017

ALL



3. "See, your Vis-i-tor is Ho-ly

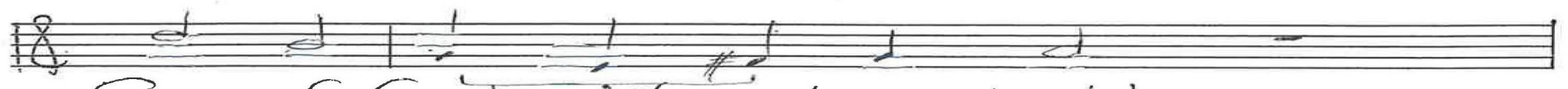
9-19
1-20
10-20
7-22



who with cloud can shade the low-ly.



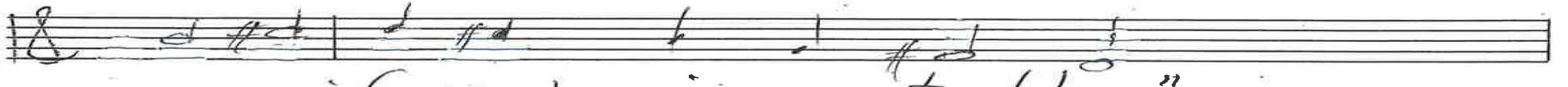
So the child will be de-vout,



Son of God with-out a doubt.



God, to ven-ture this, is a-ble,



even if you're in a sta-ble."



"I, O Lord, would vol-un-teer,



draw your spir-it ev-er near.



p. 3/3 Luke 1 Chris Nelson 2017

ALL

Intonation

1. God had Gabriel directed

9-19
10-20
6-21
3-22
9-22
5-23
1-24

In A

M

2. Do not fear

In C

Organ P. 1/3 Luke 1 Chris Nelson 2017

W

9	19
10	20
6	21
7	22
9	22
5	23
1-24	

over Israel to rule

ALL See, your Visitor,

in b(v.1)

Organ p. 2/3 Luke / Chris Nelson 2017

Handwritten musical score for the first system. The treble staff contains notes with a key signature of one sharp (F#) and a time signature of 8/8. The bass staff contains notes with a key signature of one sharp (F#). A double bar line is present in the third measure. Above the double bar line, there is a handwritten note "↓ SW".

9-19
 10-20
 6-21
 3-22
 9-22
 5-23
 1-24

Empty musical staff system with treble and bass staves.

Empty musical staff system with treble and bass staves.

Empty musical staff system with treble and bass staves.

Empty musical staff system with treble and bass staves.

Organ P. 3/3 Luke / Chris Nelson 2017