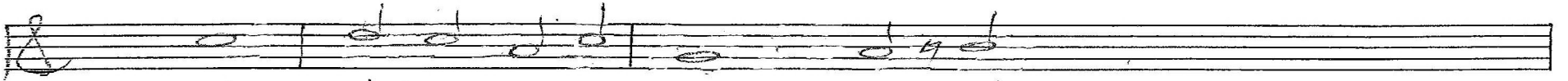


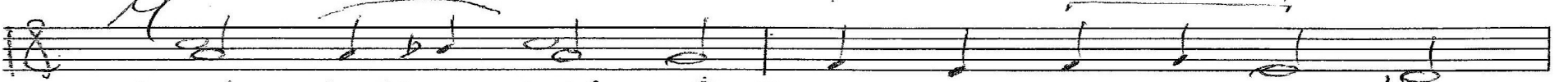
Here is the pith
John 3

9-19
10-20
4-21
3-22
1-24

Chris Nelson 2017 Chris Nelson 2017



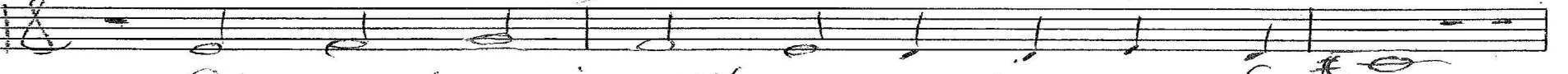
Intonation



1. Look at the pith of Jes-us' con-ver-sa-tion:



lack-ing the Ho-ly Spir-it's prep-a-ra-tion.



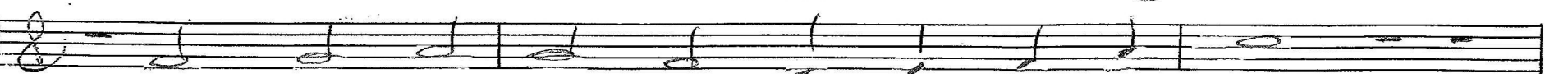
for en-ter-ing the prov-inc-es of love,



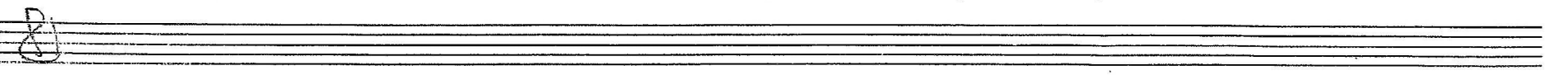
no one, with-out the sym-bol of the wa-ter,



knows how to be a spir-it-son or daugh-ter,



the flesh be-low, the Spir-it from a-bove.



p. 1/5 John 3 Chris Nelson 2017

ALL

2. ALL who be-gin to lis-ten to the breez-es

9-19
10-20
4-21
3-22

af-ter the wind starts blow-ing where it pleas-es -

can't un-der-stand its bend-ing of the reed, Mt. 11:7

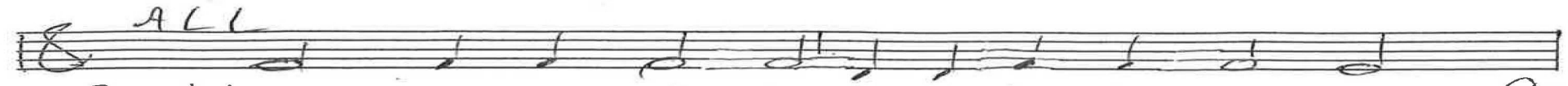
can't tell, by look-ing close-ly, its di-rection,

when they would like to know it by in-spec-tion -

be born a-gain, it's pos-si-ble in-deed!

P. 2/5
John & Chris Nelson 2017

ALL



3. Use an example no one is de-ny-ing:

9-19
10-20
4-21
7-22
9-23



up to the heav-ens none may go by try-ing



ex-cept the one who left, the Son of Man,



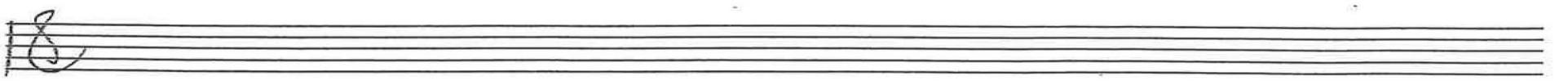
who, as with Mo-ses' ser-pent, must be lift-ed



so to en-sure our prin-ci-ples are shift-ed



to God's em-bracing u-ni-vers-al plan.



p. 3/5 John 3 Chris Nelson 2017

18

9-19

10-20

4-21

3-22

5-23

ALL

4. God loved the world so much that we're for-giv-en,

gave us the Son who's come to us and striv-en

for life, for an-y los-ers who be-lieve,

This was a gift and not a prov-o-ca-tion,

so to ful-fill the pur-pose of sal-va-tion,

the choice a Son was prompt-ed to a-chieve.

p. 4/5 John 3 Chris Nelson 2017



5. Here they can know that e-vil is e-lud-ing

9-19
10-20
4-21
3-22



heat from the sun, so one could be con-elud-ing



pre-ferred by them is dark-ness they ap-plaud.



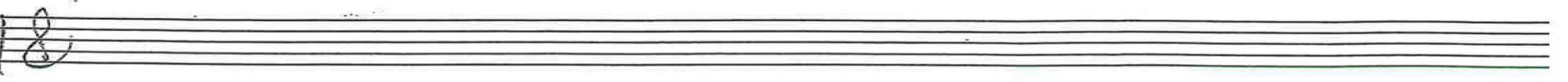
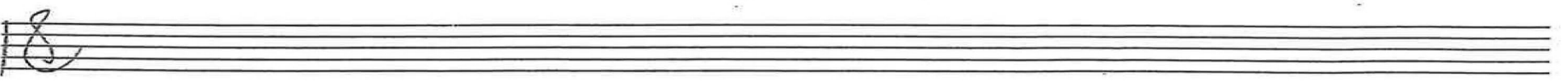
Those with two eyes for sight and ears for hear-ing



live by the light of truth, and it's ap-pear-ing



that all they do is plain-ly done in God.



p. 5/5 John 3 Chris Nelson 2017

Intonation Chorale 1. look at the pitch

Ind

10-19
1-20
10-20
4-21
6-21
7-22
9-22
5-23
9-23
(24)

Organ P. 1/4 John 3 Chris Nelson 2017

see v.4 ms. 2

ALL

2. ALL who begin

In B^b, (2nd half inverted)

ossia

Handwritten musical notation for the first system, including a treble clef staff with a melody and a bass clef staff with chords. The text "begin inversion" is written above the bass staff. A list of numbers is on the right: 10-19, 1-20, 10-20, 4-21, 6-21, 3-22, 9-22, 10-22, 5-23, 9-23, 1-24.

Handwritten musical notation for the second system, including a treble clef staff with a melody and a bass clef staff with chords. The text "ALL in F Use an example" is written above the bass staff.

Handwritten musical notation for the third system, including a treble clef staff with a melody and a bass clef staff with chords. The text "be born again" is written above the bass staff.

Handwritten musical notation for the fourth system, including a treble clef staff with a melody and a bass clef staff with chords.

Handwritten musical notation for the fifth system, including a treble clef staff with a melody and a bass clef staff with chords. The text "Come, Holy Ghost, God and Lord" is written above the bass staff.

Organ p. 2/4 John 3 Chris Nelson 2017

10-19
1-20
10-20
4-21
6-21
3-22
9-22
5-23
9-23
1-24

W Express,

4. God loved the world

In B (v.2)

begin inversion

express. ALL in E^b (v.1)

5. Here they can know

Organ p. 3/4 John 3 Chris Nelson 2017

10-19
5-20
10-20
4-21
6-21
3-22
9-22
5-23
9-23
1-24

Aug. descant

(reverberation)

Organ p. 4/4 John 3 Chris Nelson 2017