

18 Lord, my asylum

Psalm 7

11-19  
2-21  
7-22

Chris Nelson 2018

Chris Nelson 2018

Intonation

ALL

1. Lord, my a-sy-lum and my shel-ter,

Keep me from run-ning hel-ter-skel-ter,

lest an-y fi-on rant and rave,

tear in-to pieces one you'd save.

If I have sim-u-lat-ed blind-ness

spared one that bore to me no kind-ness,

then let the brute in its dis-gust

stamp my e-mo-tions in the dust,

P. 1/4

Psalm 7

Chris Nelson 2018

18

11-19  
2-21  
7-22

18 *w*

2. Wake up to start ad-jud-i-ca-tion,

face this di-vi-sive con-fron-ta-tion!

Take on the ar-ro-gance my foes

showed when your faith-ful-ness a-rose.

Group your as-sem-bly for re-la-tions

round you, the ar-bi-ter of na-tions,

no sen-tenc-es that change or swerve,

but ev-ery good my folk de-serve.

P. 2/4 Psalm 7  
Chris Nelson 2018

18

11-19  
2-21  
7-22

3. Lord, my po-si-tion guar-an-tee-ing,

you who as-sess the in-ner be-ing,

care for your ser-vant when I'm pressed,

grant me pro-tec-tion as your guest.

God, you're as-tute and thor-ough-go-ing,

quick that your gra-cious-ness be show-ing,

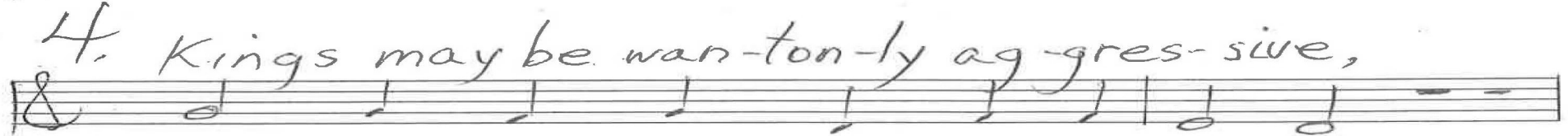
but an-gry to the full ex-tent

at their re-fus-al to re-pent.

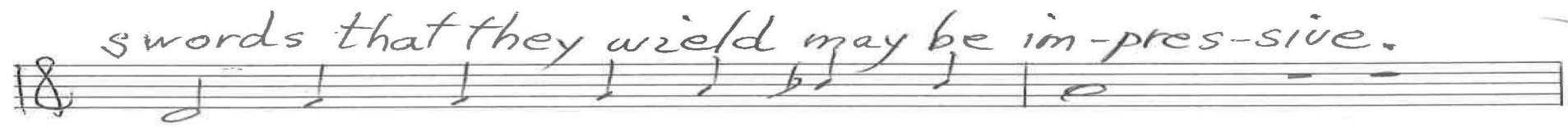
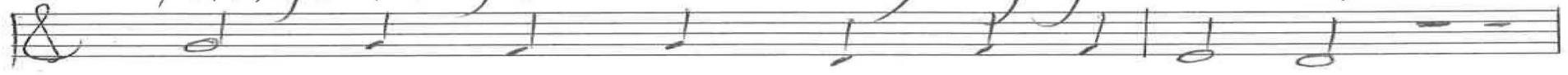
P. 3/4 Psalm 7 Chris Nelson 2018



11-19  
2-21  
7-22



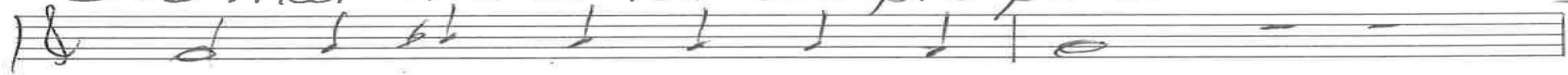
4. Kings may be wan-ton-ly ag-gres-sive,



swords that they wield may be im-pres-sive.



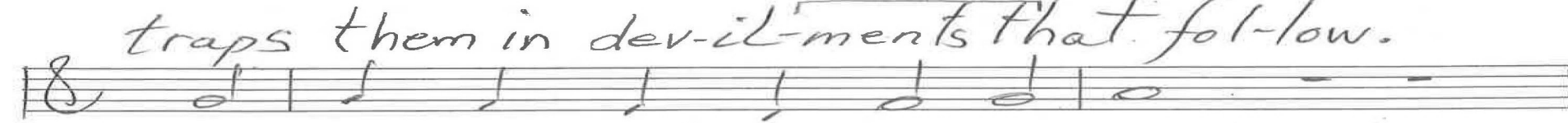
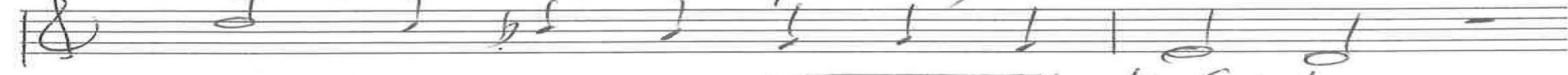
See that the ar-row one pre-pares



aims to the mid-dle of af-fairs.



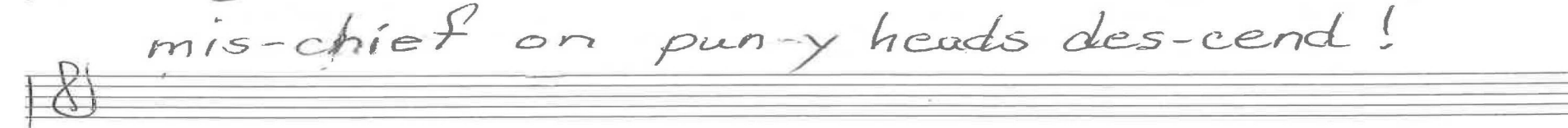
See that the cra-ter-pit they hol-low



traps them in dev-il-ments that fol-low.



Some ac-ci-dents to speed their end,



mis-chief on pun-y heads des-cend!

p. 4/4 Psalm 7

Chris Nelson 2018



(speak and let us hear your word)

2. Wake up and start

In G

6-19  
2-21  
11-21  
7-22  
3-23  
11-23

Jesus, come! for we

invite you

M

3. Lord, my position

In G (v. 2)

Organ p: 2/4

Psalms 7

Chris Nelson 2018

Legato pd.

6-19  
2-21  
11-21  
7-22  
3-23  
11-23

Organ p. 3/4

Psalms 7

In 9 (v. 1)

Chris Nelson 2018

Handwritten musical notation for the first system. The top staff is a treble clef staff with a melody. The bottom two staves are a grand staff with chords and a bass line. The notation is in 4/4 time and includes various accidentals and dynamics.

6-19  
2-21  
11-21  
7-22  
3-23  
11-23

Handwritten musical notation for the second system. The top staff is a treble clef staff with a melody. The bottom two staves are a grand staff with chords and a bass line. The notation is in 4/4 time and includes various accidentals and dynamics.

Handwritten musical notation for the third system. The top staff is a treble clef staff with a melody. The bottom two staves are a grand staff with chords and a bass line. The notation is in 4/4 time and includes various accidentals and dynamics.

Empty musical staves for the fourth system, consisting of a treble clef staff and a grand staff.

Empty musical staves for the fifth system, consisting of a treble clef staff and a grand staff.

Organ p. 4/4  
Psalm 7

Chris Nelson 2018