

ALL (Intonation-phrase 1 of Gn 48)

11-19
12-20
5-22
3-24

1. So great is our God that we sing

in zones that are meant for a King,

fair and su-perb in el-e-va-tion,

joy to the zen-ith of e-la-tion,

Zi-on, city on a hill,

wa-ter flow-ing from a rill.

For-eign mon-archs once as-sem-bled,

came with zest but la-ter trem-bled.

Zea-lous arm-ies ran in pan-ic

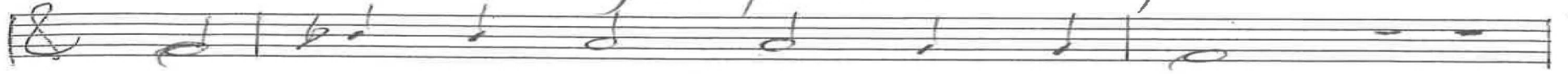
from her for-tress-es ti-tan-ic,

p. 1/3 Psalm 48 Chris Nelson 2018

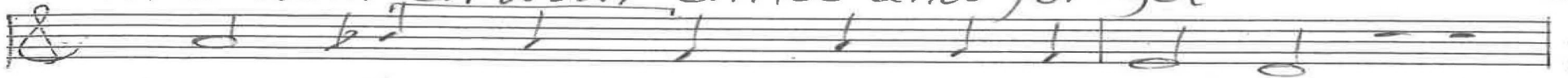


2. were writh-ing in pain on the spot

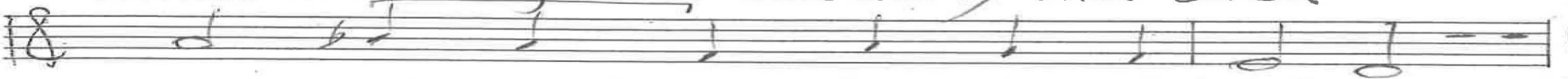
11-19
12-20
5-22



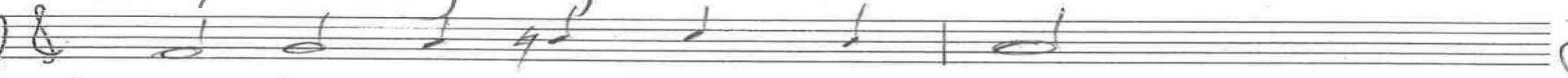
like wom-en with child and for-got



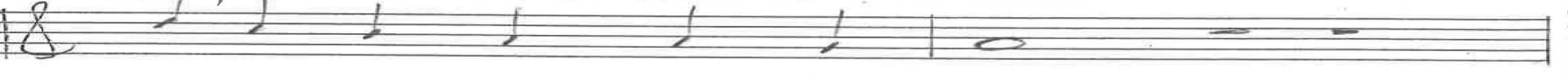
winds blow-ing west had du-ly shat-tered



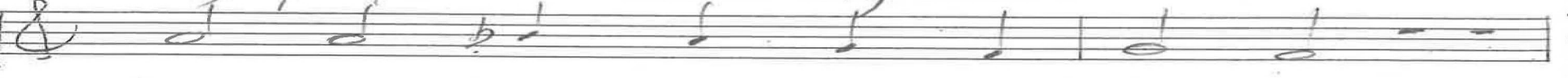
ships bring-ing mer-CHAN-dise all fat-tered.



Tem-ple ser-vants heard and saw



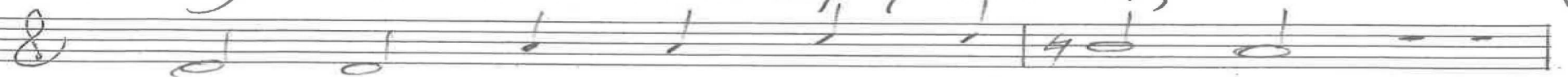
ho-ly proph-ets teach-ing law.



God, your courts in-vite re-flec-tion



on your ar-dor and af-fec-tion,



time for prais-es get-ting hur-led



from all cor-ners of your wor-ld.

p. 2/3 Psalm 48 Chris Nelson 2018

ALL

3. Your ven-tures are graced with suc-cess,

11-19
12-20
5-22

that moun-tain has more to ex-press.

Towns that sur-round her are ex-ult-ing,

blessed that you're judg-ing and con-sult-ing.

Go through Zi-on, walled a-round,

view-ing pal-ac-es re-nowned.

Tell the com-ing gen-e-ra-tion

help is found with-in the na-tion.

God will be our guide for-ev-er,
who to rule us will en-deav-or.

p. 3/3 Psalm 48 Chris Nelson 2018

Intonation

Gt

Cm 48

ALL

1. So great

10-19
12-20
9-21
5-22
12-23
9-23
3-24

In Eb

Organ p. 1/4

Palm 48

Chris Nelson 2018

W
2, were writhing

In F-d, Geneva 48

10-19
12-20
9-21
5-22
12-22
9-23
3-24

Organ p. 2/4

Psalms 48

Chris Nelson 2018

ALL

3. Your ventures

in C, v. 1 inverted

10-19
12-20
9-21
5-22
12-22
9-23
3-24

Organ p. 3/4

Psalms 48

Chris Nelson 2018

Handwritten musical notation for the first system. The top staff is in treble clef and the bottom staff is in bass clef. The music consists of several measures with notes and chords. A bar line is present after the second measure. The notation includes various note values and accidentals.

10-19
12-20
9-21
5-22
12-22
9-23
3-24

Organ p. 4/4

Two empty musical staves, one in treble clef and one in bass clef, for the second system.

Two empty musical staves, one in treble clef and one in bass clef, for the third system.

Psalms 48

Two empty musical staves, one in treble clef and one in bass clef, for the fourth system.

Chris Nelson 2018

Two empty musical staves, one in treble clef and one in bass clef, for the fifth system.