

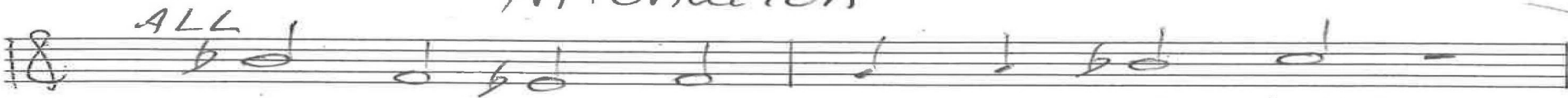
Let the drylands blossom
Isaiah 35

12-20
5-22

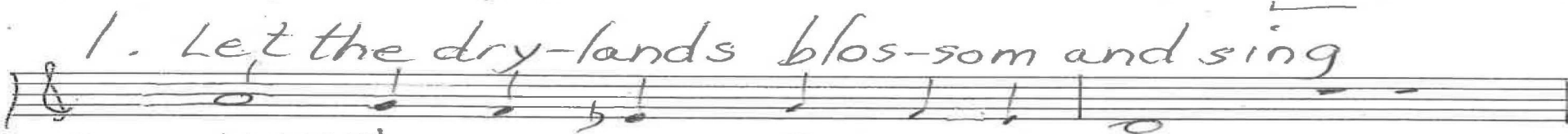
Chris Nelson 2018 Chris Nelson 2018



Intonation



ALL



1. Let the dry-lands blos-som and sing



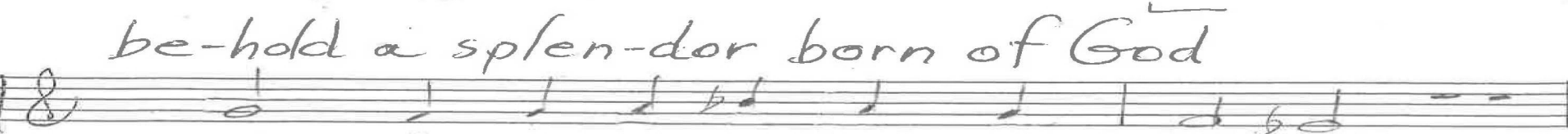
while the de-luge of ev-ery spring



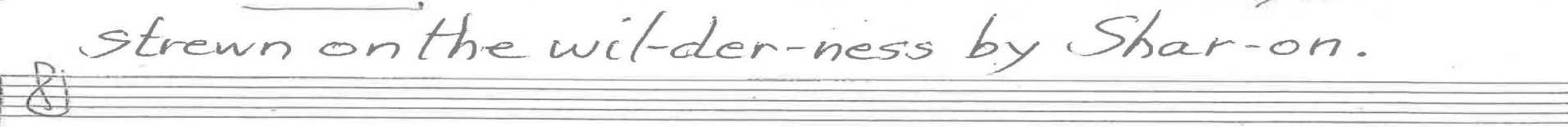
fills up the wa-dis that were bar-ren.



On car-pets of ro-ses un-trod



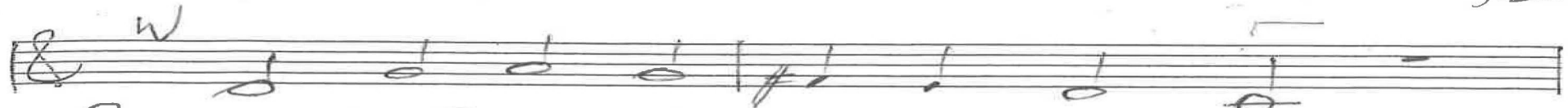
be-hold a splen-dor born of God



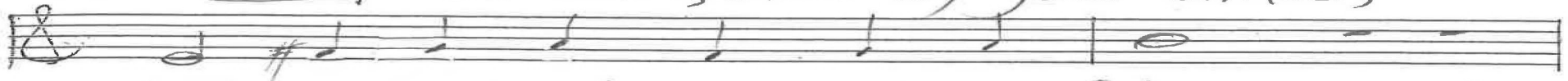
strewn on the wil-der-ness by Shar-on.

p. 1/3
Isaiah 35
Chris Nelson 2018

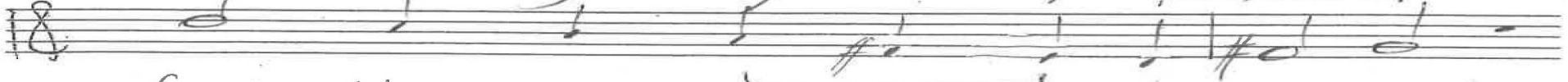
12-20
5-22



2. On to Car-mel, stea-dy your child,



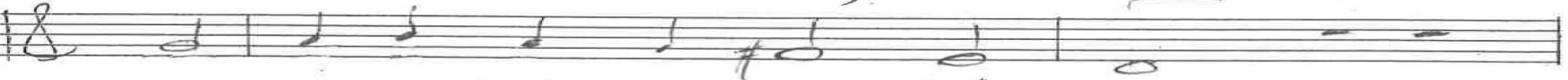
walk on a high-way un-de-filed,



streng-then your cour-age in the maz-es!



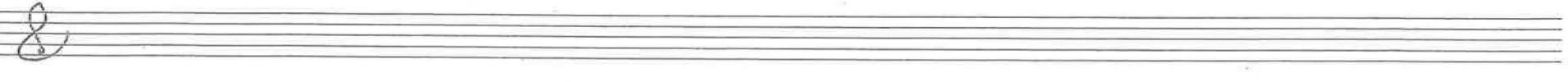
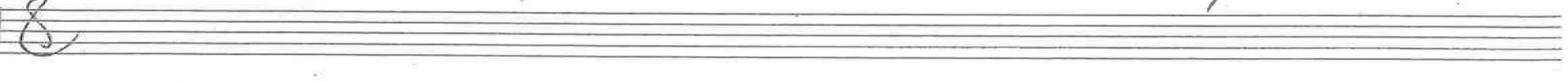
The blind shall take in, the deaf hear,



the in-va-lid ca-vort like deer,



cured, while the dumb re-cite their prais-es.



p. 2/3 Sarah 35 Chris Nelson 2018

12-20
5-22

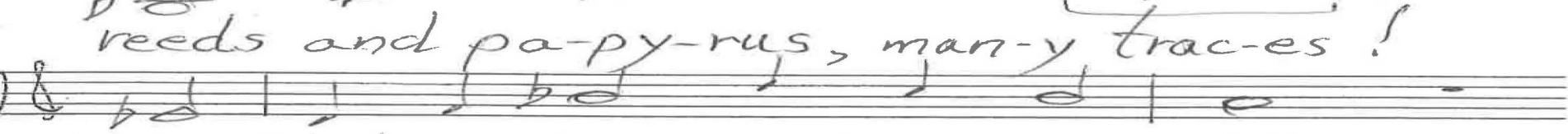
ALL



3. No fer-o-cious beast will be there,



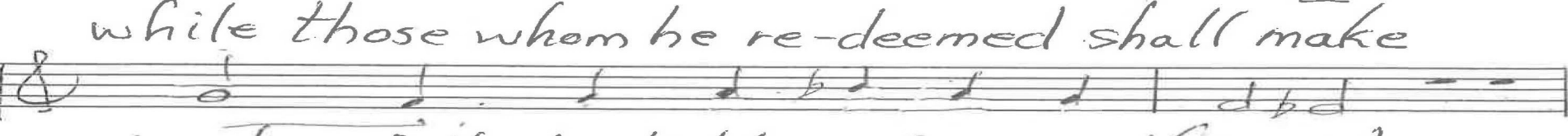
nor an-y li-on in its lair,



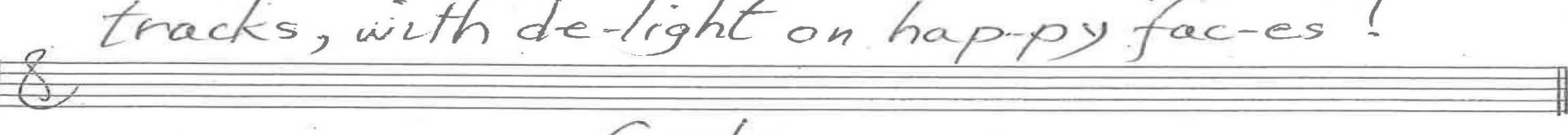
reeds and pa-py-rus, man-y trac-es!



A thirs-ty dry earth be-comes lake

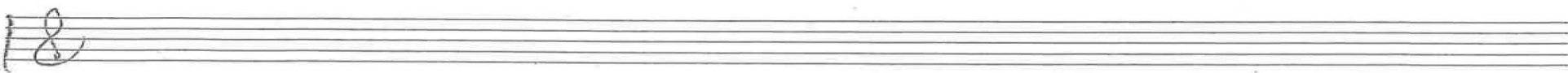


while those whom he re-deemed shall make



tracks, with de-light on hap-py fac-es!

Coda



p. 3/3 / Isaiah 35 Chris Nelson 2018

Intonation

1. Let the drylands

10-19
12-20
9-21
5-22
12-22
9-23
3-24

In B \flat

Organ p. 1/2

Sarah 35

2. On to Carmel

In G, v. 1 inverted

Chris Nelson 2018

Handwritten musical score for the first system. The treble clef staff contains a melody with notes and rests. The bass clef staff contains chords with various accidentals (sharps and naturals). There are some markings like '4' and '+' above the notes.

10-19
12-20
9-21
5-22
11-22
9-23
3-24

Organ p. 2/2

Handwritten musical score for the second system. The treble clef staff has a melody. The bass clef staff has chords. The title "3. No ferocious beast" is written in the center. The instruction "In B \flat , v. 1" is written below the staff. There is also a small "ALL" marking above the first few notes of the melody.

In B \flat , v. 1

Handwritten musical score for the third system. The treble clef staff continues the melody. The bass clef staff continues the chords. There are various accidentals and markings throughout.

Isaiah 35

Handwritten musical score for the fourth system. The treble clef staff continues the melody. The bass clef staff continues the chords. There are various accidentals and markings throughout.

Chris Nelson 2018

Handwritten musical score for the fifth system. The treble clef staff has a melody. The bass clef staff has chords. The word "Coda" is written above the staff. There are various accidentals and markings throughout.

Coda ph. 1