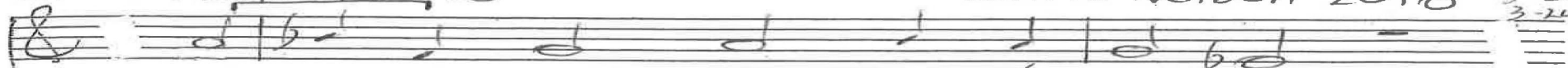


A little while now

Chris Nelson 2018 Hebrews 10

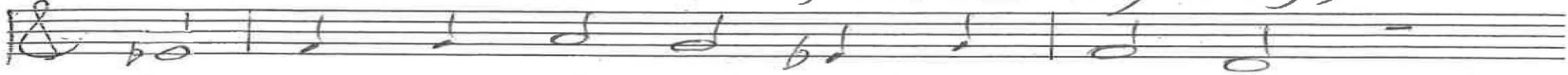
Chris Nelson 2018

11-19
12-20
5-22
3-24



intonation - phr. 1 of Gn 149

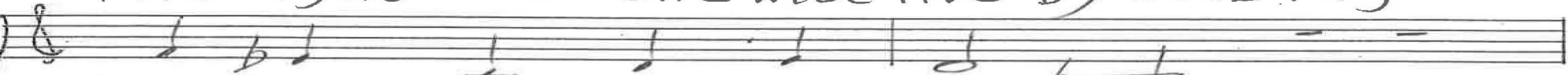
1, "A lit-tle while now, not de-lay-ing,



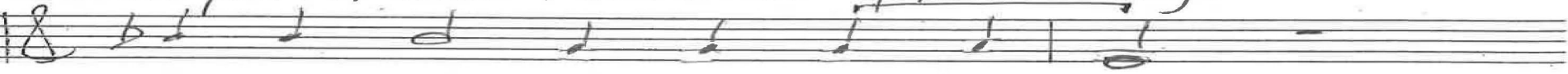
the wag-es of sin we'll be pay-ing.



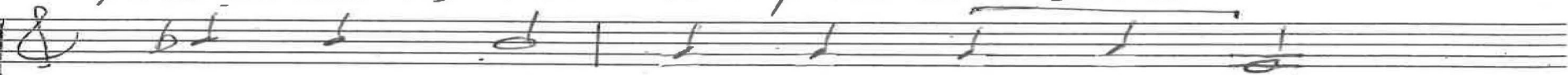
The right-eous one will live by seiz-ing



the faith our Fa-ther pleas-ing."



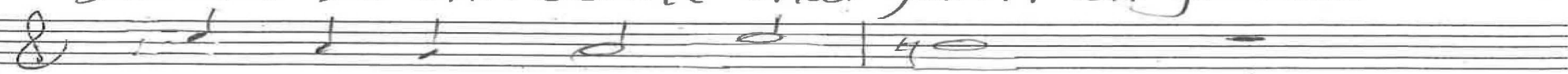
You and I, not the pla-cid sort



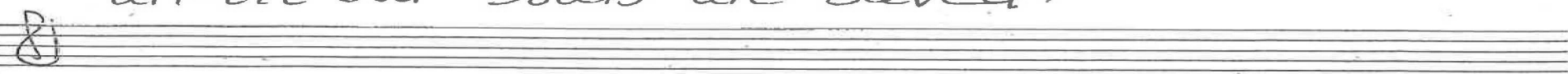
pull-ing back, los-ing one's sup-port,



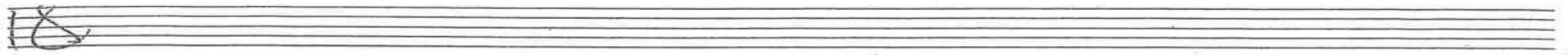
should be the scroll that faith en-graved



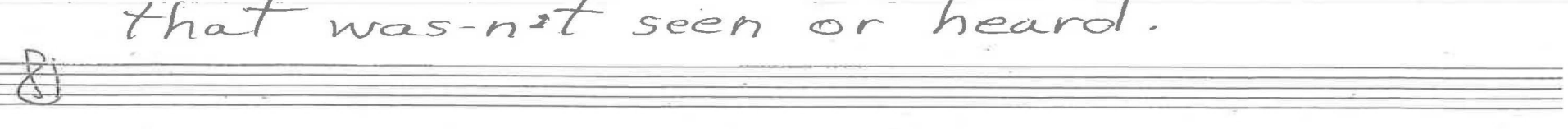
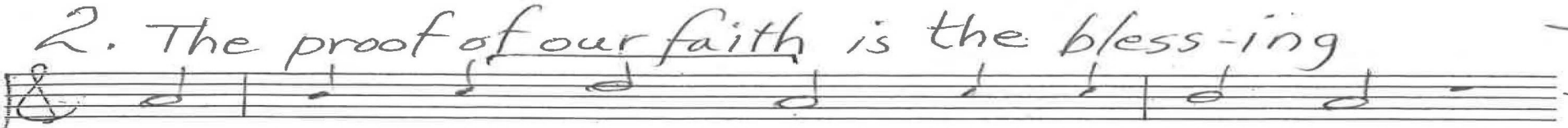
un-til our souls are saved.



p. 1/2 Hebrews 10 Chris Nelson 2018



11-19
12-20
5-22



p. 2/2 Hebrews 10 Chris Nelson 2018

Intonation Gn 149

Gt.

ALL

1. A little while

10	19
12	20
9	21
5	22
12	22
9	23
5	24

In B^b

2. The

In d, Genevan 149

proof

Organ p. 1/2 Hebrews 10 Chris Nelson 2018

Handwritten musical notation for the first system, featuring a treble clef staff with a melody and a bass clef staff with chords. The notation includes various notes, rests, and accidentals. A list of measure numbers is written on the right side of the system: 10-19, 12-20, 9-21, 7-22, 12-22, 9-23, and 3-24.

Handwritten musical notation for the second system, continuing the melody and chords from the first system. It includes various musical notations such as notes, rests, and accidentals.

Handwritten musical notation for the third system, which includes the word "Coda" written in the treble clef staff. The notation includes various notes, rests, and accidentals. The text "(v.1)" is written above the staff.

In B^b (v.1)

Handwritten musical notation for the fourth system, featuring a treble clef staff with a melody and a bass clef staff with chords. The notation includes various notes, rests, and accidentals. The text "Sw" is written above the treble staff and below the bass staff.

Two empty musical staves, one with a treble clef and one with a bass clef, located at the bottom of the page.

Organ p. 2/2
Hebrews 10
Chris Nelson 2018