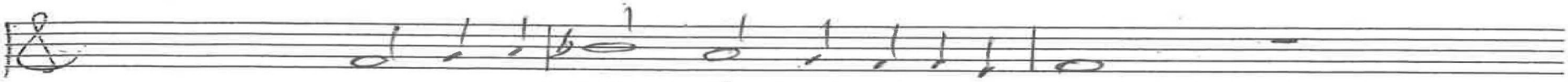


There was the princess
Exodus 2

1-20
12-20
5-22

Chris Nelson 2018 Chris Nelson 2018



Intonation



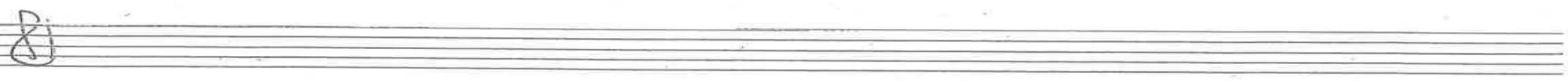
1. There was the prin-cess, bath-ing in the Nile,

and there was that basket a-mongst the reeds!

In-side it, the child so fine with its needs

moved them e-nough for sym-pa-thy a-while,

'This trea-sure for sure to the throne ac-cedes.'



p. 1/3 Exodus 2 Chris Nelson 2018

18

1-20
12-20
5-22

2. Some dis-tance off, the ba-by's sis-ter stood,

"I'll hur-ry and look for a He-brew nurse,

a wom-an to fix af-fairs so ad-verse."

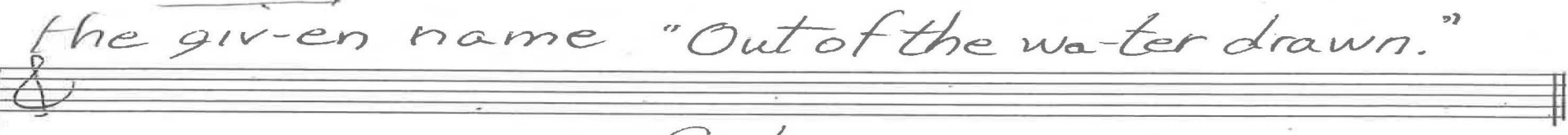
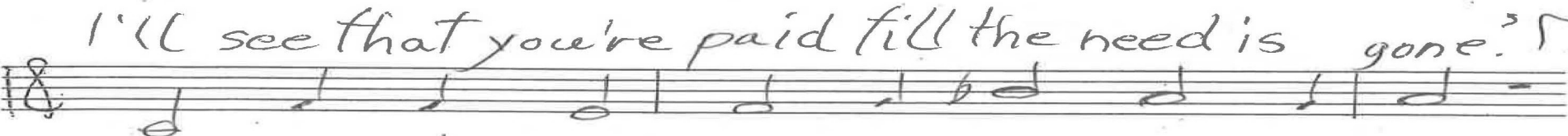
'Yes', and she went as sis-ters sure-ly would

its moth-er to find be-ing none the worse.

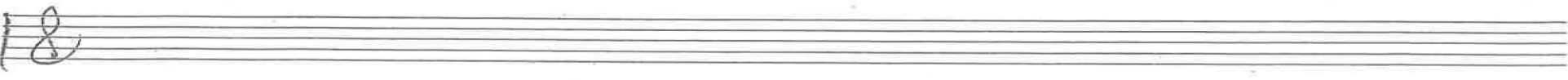
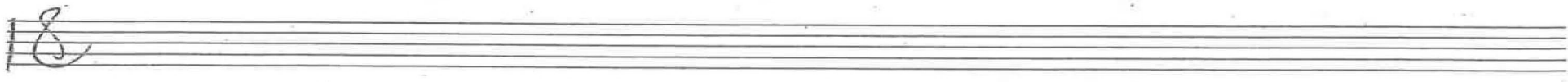
p. 2/3 Exodus 2 Chris Nelson 2018



1-20
12-20
5-22



Coda



P. 3/3 Exodus 2 Chris Nelson 2018

4-19
12-20
7-21
5-22
5
12-22
9-23
3-24

ALL

Intonation

1. There was the princess

In F, Geneva 124

W

2. Some distance off

In e

Organ p. 1/2
Exodus 2
Chris Nelson 2018

Handwritten musical notation for the first system, featuring a treble and bass staff. The treble staff contains a melodic line with various notes and rests. The bass staff contains a bass line with notes and rests. The text "ALL" is written above the treble staff, and "3. Take him away" is written below it. The notation includes dynamic markings like accents and slurs.

4-19
12-20
9-21
5-22
12-22
9-23
3-24

Handwritten musical notation for the second system, featuring a treble and bass staff. The treble staff contains a melodic line. The bass staff contains a complex accompaniment with many beamed notes and chords. The text "(v. 1)" is written below the bass staff.

Handwritten musical notation for the third system, featuring a treble and bass staff. The treble staff contains a melodic line. The bass staff contains a complex accompaniment with many beamed notes and chords.

Handwritten musical notation for the fourth system, featuring a treble and bass staff. The treble staff contains a melodic line. The bass staff contains a complex accompaniment with many beamed notes and chords. The text "rit." is written above the treble staff, and "Coda (v. 2)" is written below the treble staff. The text "Sw" is written above the bass staff.

Handwritten musical notation for the fifth system, featuring a treble and bass staff. Both staves are empty, indicating the end of the piece.

Organ P. 2/2
Exodus 2
Chris Nelson 2024