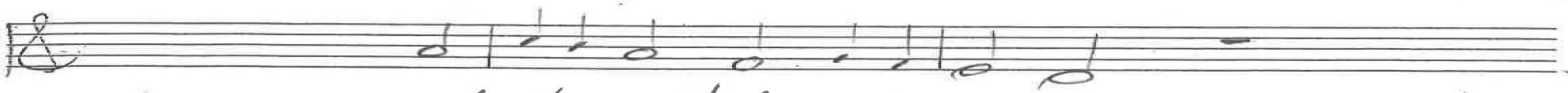


As those who shun God
Psalm 112

1-20
12-20
5-22

Chris Nelson 2018 Chris Nelson 2018
Series 10

Intonation



ALL



1. As those who shun God go on liv-ing,



Blessed those who go right on for-giv-ing,



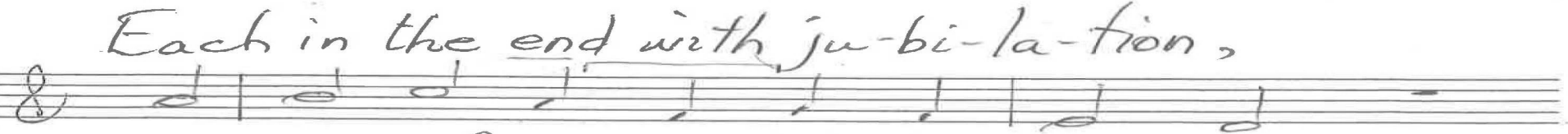
Cream of the crop that keeps on rang-ing,



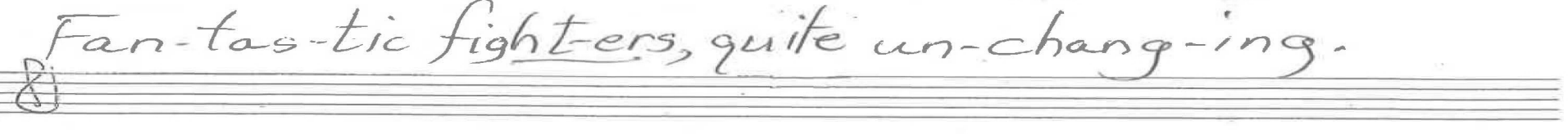
Dealt their de-cend-ants high-er sta-tion,



Each in the end with ju-bi-la-tion,



Fan-tas-tic fight-ers, quite un-chang-ing.



p. 14 Psalm 112 Chris Nelson 2018

18

1-20
12-20
5-22

2. Glows bright-er the dark when they've ris-en,

Hap-py when vis-it-ing a pris-on,

I'll when they're irked by what they're lend-ing,

Joined to the joy-ful, vol-un-teer-ing,

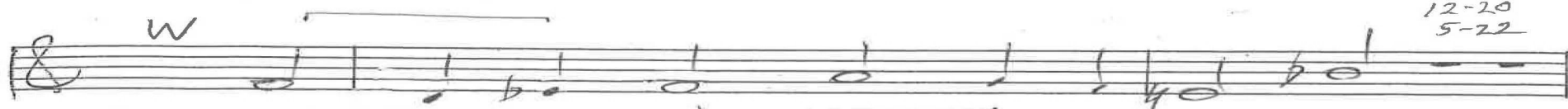
Kept in the know and per-se-ver-ing,

Leave tell-ing leg-a-cies un-end-ing.

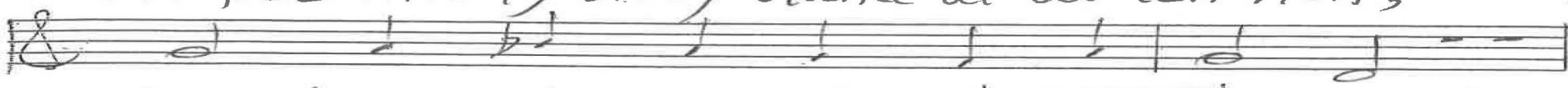
p. 2/4
Psalm 112
Chris Nelson 2018



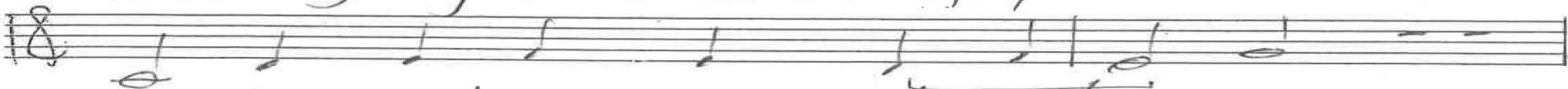
1-20
12-20
5-22



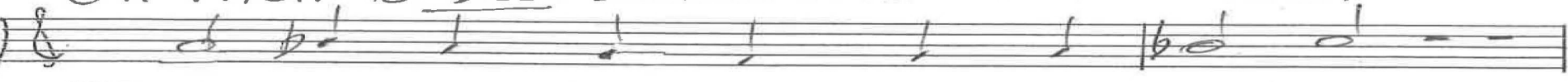
3. Most like-ly they stand at at-ten-tion,



News trying to scat-ter ap-pre-hen-sion



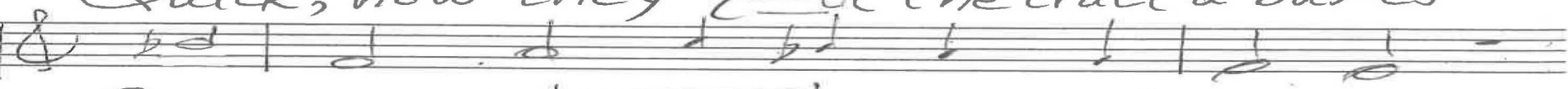
On their or-bed-ience and re-ti-ance,



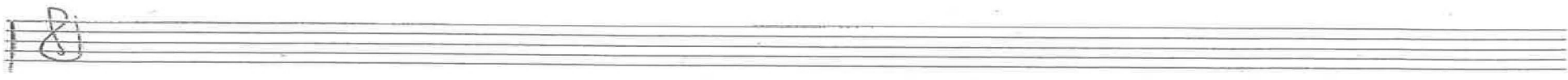
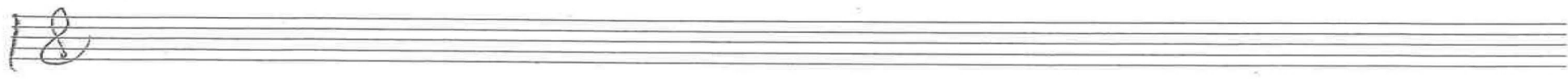
Put in their place the lame ex-cus-es,



Quick, how they quell the cruel a-bus-es



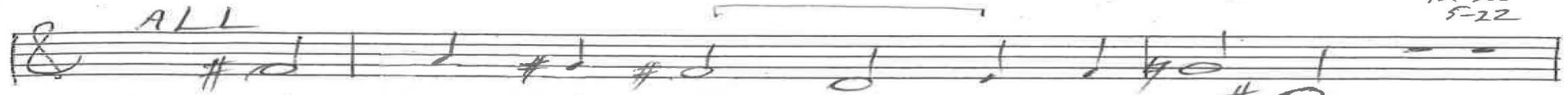
Re-ceived from re-pro-bates and gi-ants.



p. 3/4 Psalm 112 Chris Nelson 2018

1-20
12-20
5-22

ALL



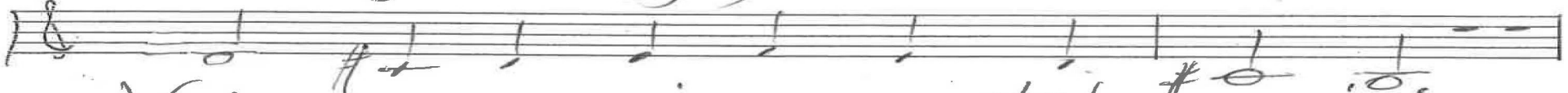
4. Such per-sons are young in re-la-tion



To car-ing not for re-pu-ta-tion,



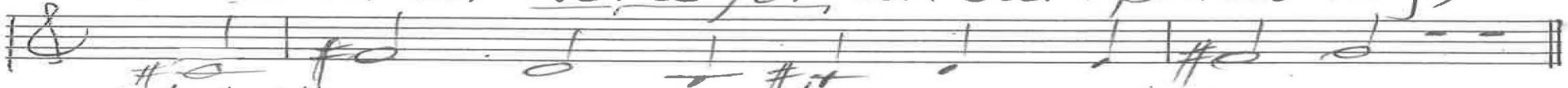
Us-ing the ug-ly as a lev-er.



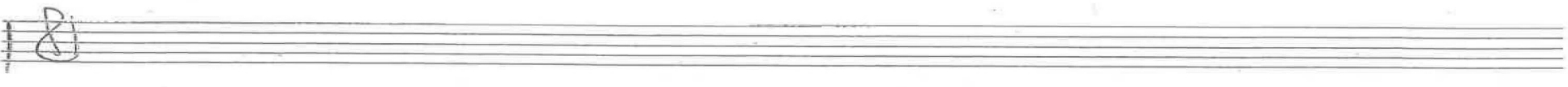
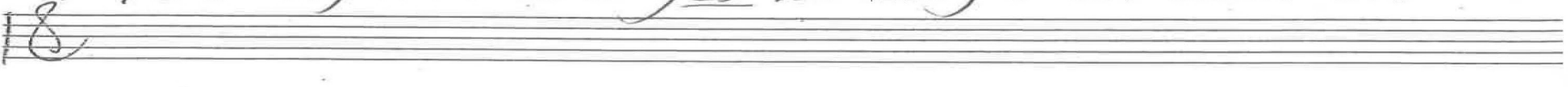
Vain, an-y voic-es can't be prais-ing,



We count on Word for all our phras-ing,



Yet hymns are yes-ter-day's en-deav-or.



P. 4/4 Psalm 112 Chris Nelson 2018

Intonation

ALL 1. As those

10-19
 -12-20
 9-21
 7-22
 12-22
 9-23
 3-24

In d, Geneva 112

Organ p. 1/3

Psalms 112

M

2. Glows brighter

In Eb

Chris Nelson 2018

Handwritten musical notation for the first system, featuring a treble clef staff with a melody and a bass clef staff with chords. The key signature has one flat (B-flat).

10-19
12-20
9-21
5-22
12-22
9-23
3-24

Organ p. 2/3

Handwritten musical notation for the second system, including a treble clef staff with a melody and a bass clef staff with chords. The key signature has one flat. Includes the instruction "3. Most likely".

In F, v. 2 inverted

Handwritten musical notation for the third system, featuring a treble clef staff with a melody and a bass clef staff with chords. The key signature has one flat.

Psalms 112

Handwritten musical notation for the fourth system, featuring a treble clef staff with a melody and a bass clef staff with chords. The key signature has one flat.

Chris Nelson 2018

Handwritten musical notation for the fifth system, featuring a treble clef staff with a melody and a bass clef staff with chords. The key signature has two sharps (D major). Includes the instruction "Such persons ALL".

Such persons ALL In D (v. 2)

Organ p.3/3

Psalm 112

Chris Nelson 2018